



Flow Dividers and Combiners

Section 12

SECTION 12

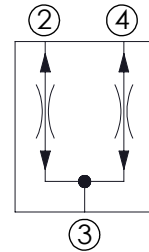
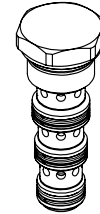
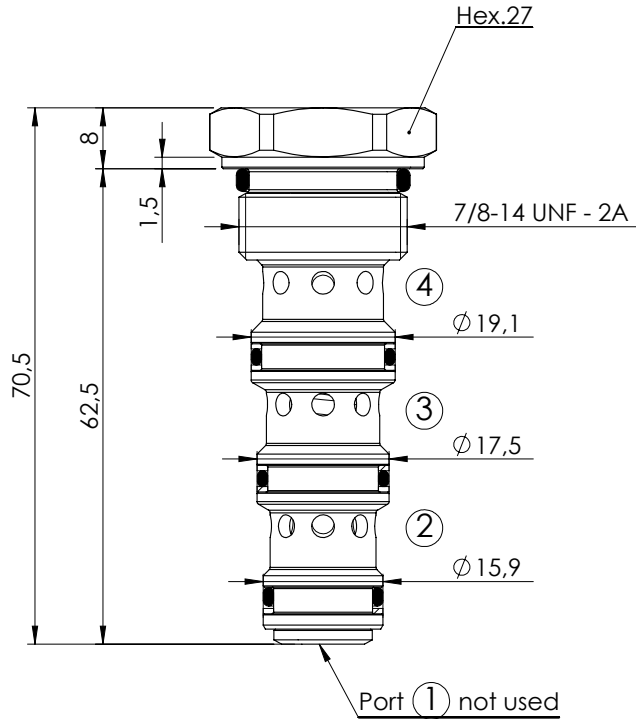
FLOW DIVIDERS AND COMBINERS



| Hydraulic scheme | Valve description | Valve type | Rated flow (l/min) | Max. pressure (bar) | Installation | Main port size or cavity type | Page |
|------------------|-------------------|----------------------------------|--------------------|---------------------|--------------|-------------------------------|-----------|
| | CFDT-055-BRAR | Spool type, divider and combiner | 55 | 350 | Cartridge | SAE-10-4N | 12.01.010 |
| | CFDT-160-BRAR | Spool type, divider and combiner | 160 | 350 | Cartridge | SAE-16-4N | 12.01.020 |
| | MFDT-040-BFTR | Spool type, divider and combiner | 40 | 210 | In line | G 3/8" | 12.02.030 |
| | MFDT-040-BFTR | Spool type, divider and combiner | 40 | 210 | In line | G 1/2" | 12.02.030 |
| | MFDT-150-BFLR | Spool type, divider and combiner | 150 | 210 | In line | G 3/4" | 12.02.040 |
| | MFDT-150-BFLR | Spool type, divider and combiner | 150 | 210 | In line | G 1/2" | 12.02.040 |
| | KFDT-055-BFAR | Spool type, divider and combiner | 55 | 210 | In line | G 1/4" | 12.02.050 |
| | KFDT-055-BFAR | Spool type, divider and combiner | 40 | 210 | In line | G 3/8" | 12.02.050 |
| | KFDT-055-BFAR | Spool type, divider and combiner | 55 | 210 | In line | G 1/2" | 12.02.050 |

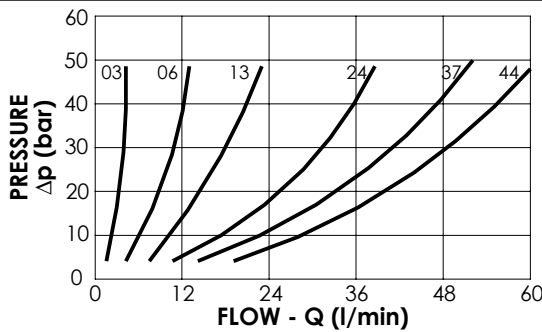
FLOW DIVIDER AND COMBINER

CFDT-055-BFRR



SPECIFICATIONS

| | |
|--------------------------|---------------|
| Max. operating pressure: | 350 bar |
| Division or combination: | 50%-50% |
| Cavity: | SAE-10-4N -3P |
| Weight: | 0,13 kg |
| Installation torque: | 40 - 65 Nm |



NOTES

Seal kit: **RB700102**

Flow divider accuracy: $\pm 7/8\%$ between 40-100% of max. input flow

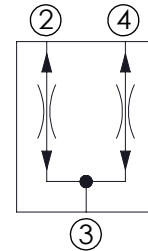
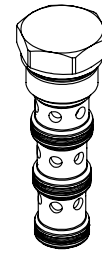
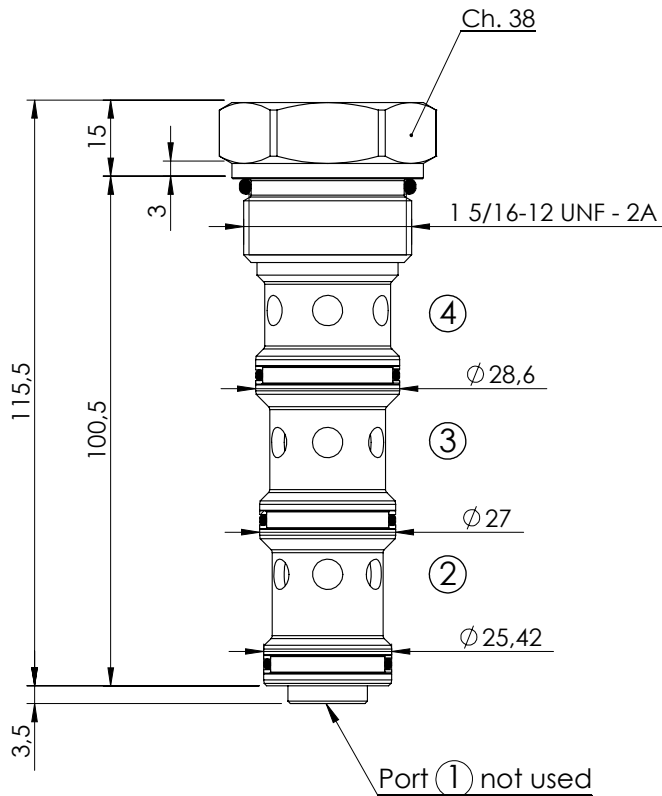
- Other dividing ratios available.

ORDERING CODES

| Quick code | Description | Inlet range Flow (l/min) | |
|------------|---------------------------|--------------------------|--|
| CF000047 | CFDT-055-BFRR-03-S10-N350 | 1,2-3 | |
| CF000048 | CFDT-055-BFRR-06-S10-N350 | 3-6 | |
| CF000049 | CFDT-055-BFRR-13-S10-N350 | 6-13 | |
| CF000050 | CFDT-055-BFRR-24-S10-N350 | 10-24 | |
| CF000001 | CFDT-055-BFRR-37-S10-N350 | 15-37 | |
| CF000051 | CFDT-055-BFRR-44-S10-N350 | 18-44 | |
| | | | |

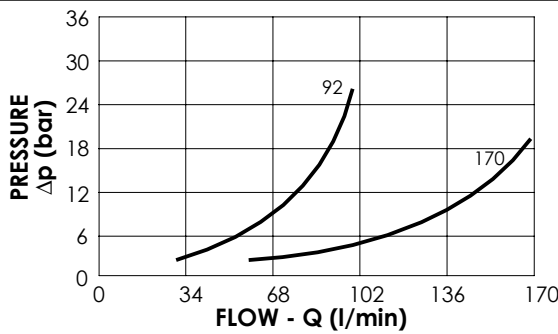
FLOW DIVIDER AND COMBINER

CFDT-160-BFRR



SPECIFICATIONS

| | |
|--------------------------|--------------|
| Max. operating pressure: | 350 bar |
| Division or combination: | 50%-50% |
| Cavity: | SAE-16-4N |
| Weight: | 0,36 kg |
| Installation torque: | 145 - 170 Nm |



NOTES

Seal kit: **RB700104**

Flow divider accuracy: $\pm 7/8\%$ between 40-100% of max. input flow

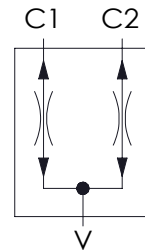
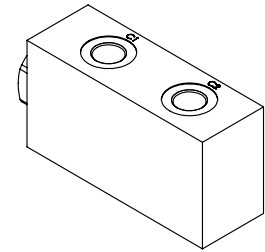
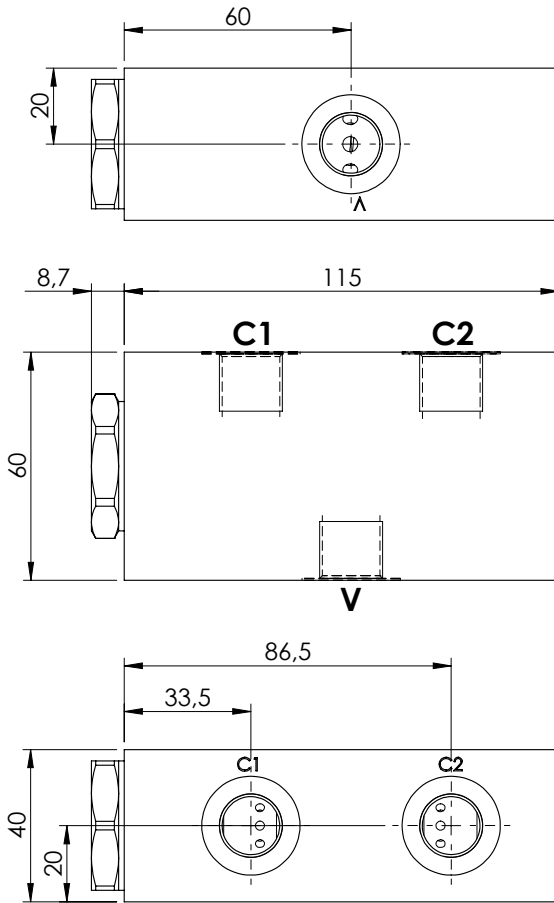
- Other dividing ratios available.

ORDERING CODES

| Quick code | Description | Inlet range Flow (l/min) | |
|------------|----------------------------|--------------------------|--|
| CF000142 | CFDT-160-BFRR-92-S16-N350 | 28 - 92 | |
| CF000144 | CFDT-160-BFRR-170-S16-N350 | 48 - 170 | |
| | | | |
| | | | |
| | | | |
| | | | |

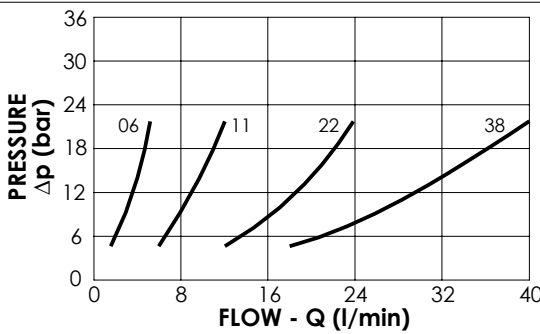
FLOW DIVIDER AND COMBINER

MFDT-040-BFTR



SPECIFICATIONS

| | |
|--------------------------|-----------|
| Max. operating pressure: | 210 bar |
| Division or combination: | 50% - 50% |
| Manifold: | Aluminium |
| Weight: | 0,88 kg |
| Cavity: | VP000242 |



NOTES

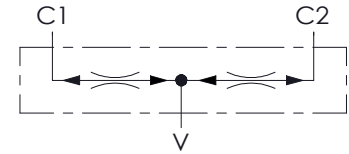
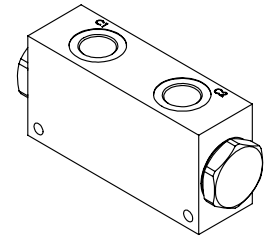
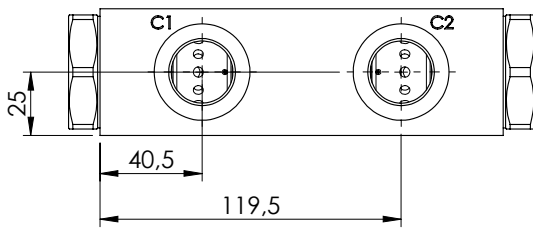
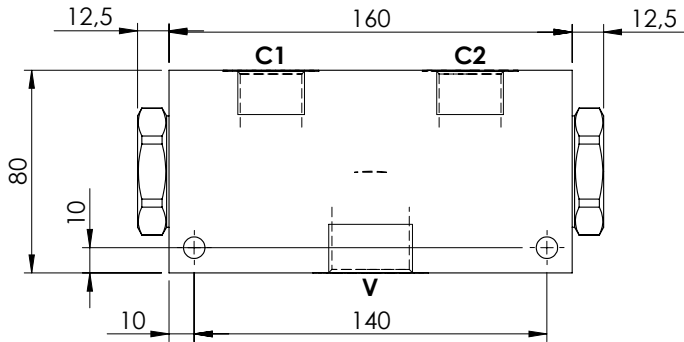
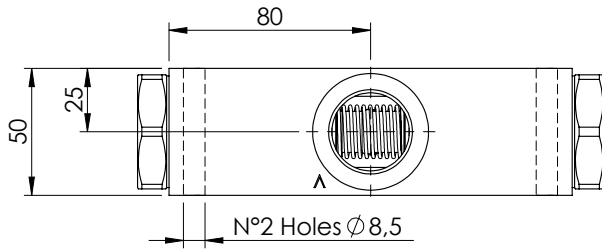
Flow divider accuracy: ± 4/5% between 40-100% of max. input flow

ORDERING CODES

| Quick code | Description | Main ports size | Inlet range Flow (l/min) | |
|------------|---------------------------|------------------------|--------------------------|--|
| MF000076 | MFDT-040-BFTR-06-G38-N210 | V:G3/8" ; C1,C2:G 3/8" | 2,8 - 5,8 | |
| MF000077 | MFDT-040-BFTR-11-G38-N210 | V:G3/8" ; C1,C2:G 3/8" | 6,5 - 11 | |
| MF000078 | MFDT-040-BFTR-22-G38-N210 | V:G3/8" ; C1,C2:G 3/8" | 13 - 22 | |
| MF000075 | MFDT-040-BFTR-38-G38-N210 | V:G3/8" ; C1,C2:G 3/8" | 25 - 38 | |
| MF000080 | MFDT-040-BFTR-06-G12-N210 | V:G1/2" ; C1,C2:G 3/8" | 2,8 - 5,8 | |
| MF000081 | MFDT-040-BFTR-11-G12-N210 | V:G1/2" ; C1,C2:G 3/8" | 6,5 - 11 | |
| MF000082 | MFDT-040-BFTR-22-G12-N210 | V:G1/2" ; C1,C2:G 3/8" | 13 - 22 | |
| MF000079 | MFDT-040-BFTR-38-G12-N210 | V:G1/2" ; C1,C2:G 3/8" | 25 - 38 | |

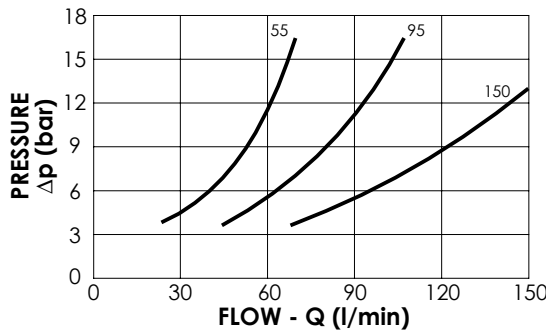
FLOW DIVIDER AND COMBINER

MFDT-150-BFLR



SPECIFICATIONS

| | |
|--------------------------|-----------|
| Max. operating pressure: | 210 bar |
| Division or combination: | 50% - 50% |
| Manifold: | Aluminium |
| Weight: | 2,1 kg |



NOTES

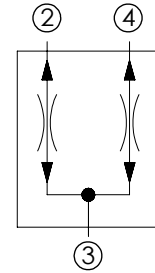
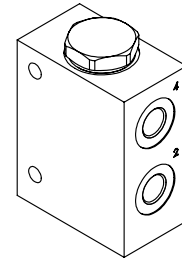
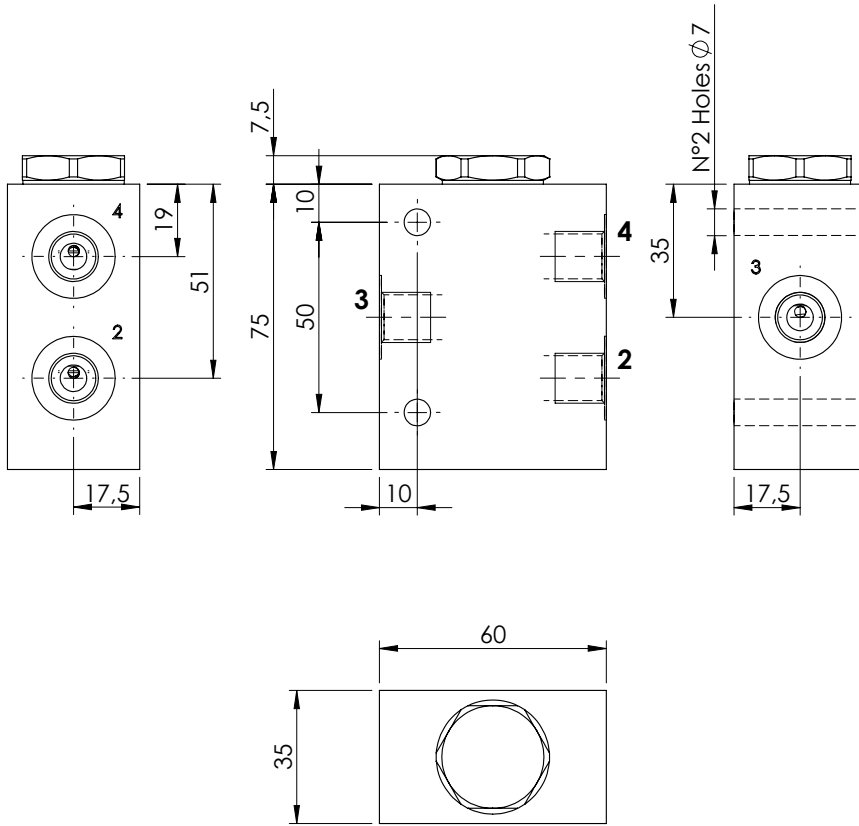
Flow divider accuracy: ± 4-5% between 40-100% of max. input flow

ORDERING CODES

| Quick code | Description | Main ports size | Inlet range Flow (l/min) | |
|------------|---------------------------|----------------------------|--------------------------|--|
| MF000117 | MFDT-150-BFLR-95-G10-N210 | V: G 1" C1,C2: G 3/4" | 56 - 95 | |
| MF000118 | MFDT-150-BFLR-15-G10-N210 | V: G 1" C1,C2: G 3/4" | 90 - 150 | |
| MF000122 | MFDT-150-BFLR-55-G34-N210 | V: G 3/4" C1,C2: G 1/2" | 28 - 55 | |
| MF000123 | MFDT-150-BFLR-95-G34-N210 | V: G 3/4" C1,C2: G 1/2" | 56 - 95 | |
| | | | | |
| | | | | |

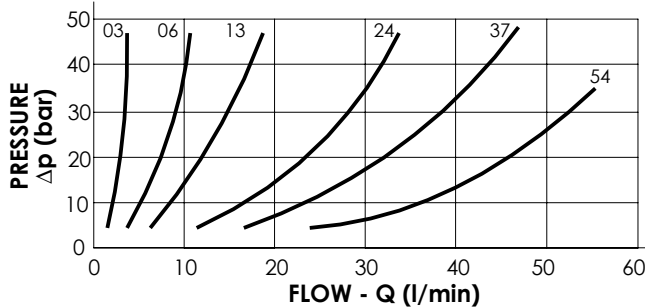
FLOW DIVIDER AND COMBINER

KFDT-055-BFAR



SPECIFICATIONS

| | |
|--------------------------|-----------|
| Max. operating pressure: | 210 bar |
| Division or combination: | 50%-50% |
| Manifold: | Aluminium |
| Weight: | 0,46 kg |
| Size: | SAE-10-4N |



NOTES

Flow divider accuracy: $\pm 7/8\%$ between 40-100% of max. input flow

ORDERING CODES

| Quick code | Description | Main ports size | Inlet range Flow (l/min) |
|------------|-----------------------------|-----------------|--------------------------|
| KF000005 | KFDT-055-BFAR-03-G14-N210-L | 2,3,4 : G 1/4" | 1.2-3 |
| KF000006 | KFDT-055-BFAR-06-G14-N210-L | 2,3,4 : G 1/4" | 3-6 |
| KF000007 | KFDT-055-BFAR-13-G14-N210-L | 2,3,4 : G 1/4" | 6-13 |
| KF000010 | KFDT-055-BFAR-13-G38-N210-L | 2,3,4 : G 3/8" | 6-13 |
| KF000011 | KFDT-055-BFAR-24-G38-N210-L | 2,3,4 : G 3/8" | 10-24 |
| KF000012 | KFDT-055-BFAR-37-G38-N210-L | 2,3,4 : G 3/8" | 15-37 |
| KF000009 | KFDT-055-BFAR-37-G12-N210-L | 2,3,4 : G 1/2" | 15-37 |
| KF000008 | KFDT-055-BFAR-44-G12-N210-L | 2,3,4 : G 1/2" | 18-44 |
| KF000004 | KFDT-055-BFAR-54-G12-N210-L | 2,3,4 : G 1/2" | 22-54 |