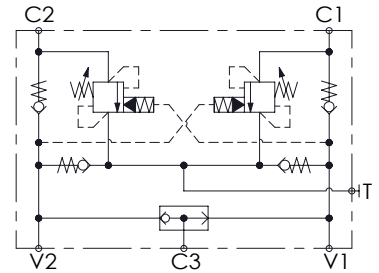
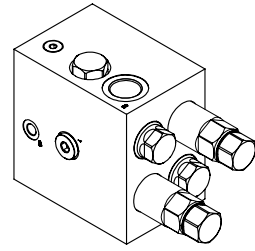
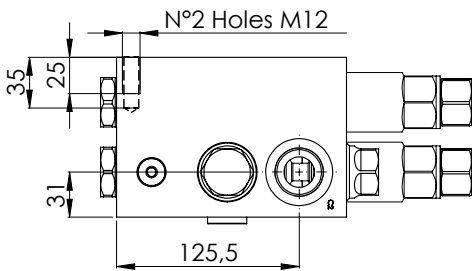
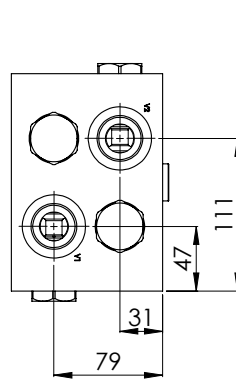
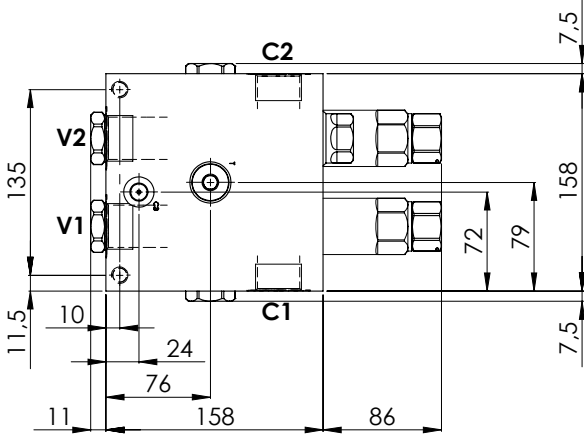
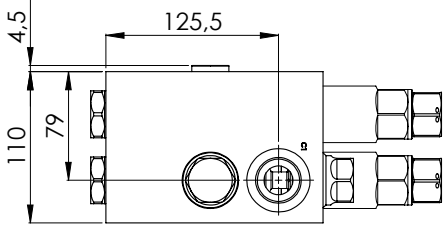


MOTION CONTROL

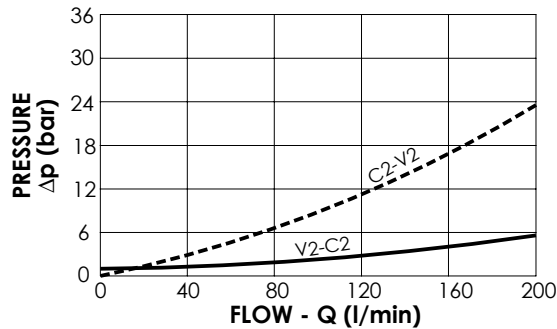
MNDN-200-LLSV

**STABILIZED
WITH BRAKE RELEASE**



SPECIFICATIONS

Max. operating pressure:	300 bar
Rated flow:	200 l/min
Manifold:	Aluminium
Weight:	9,56 kg



NOTES

Setting: at least 1.3 times the load induced pressure

ORDERING CODES

Quick code	Description	Pilot ratio	Main ports size	Standard setting (bar, Q=5 l/min)	Adjust. range (bar)	Pressure increase (bar/turn)
MN000021	MNDN-200-LLSV-08-G10-N300	8:1	V1,V2,C1,C2: G1" T: G1/2"; C3: G 1/4"	150	120-300	65