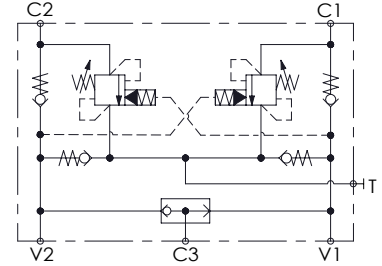
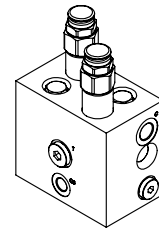
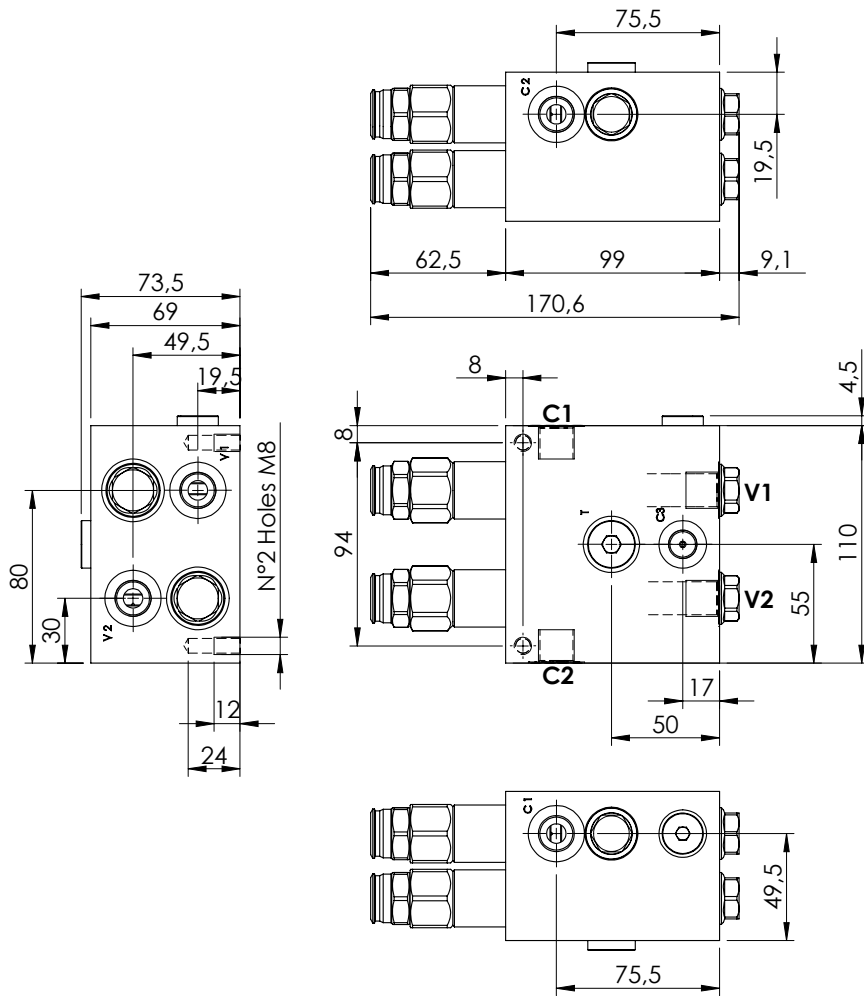


MOTION CONTROL

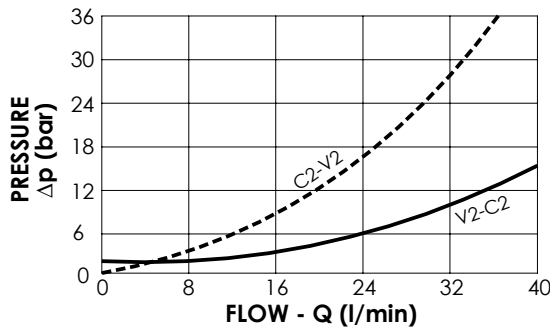
MNDN-040-LLSV

**STABILIZED
WITH BRAKE RELEASE**



SPECIFICATIONS

Max. operating pressure:	300 bar
Rated flow:	40 l/min
Manifold:	Aluminium
Weight:	2,66 kg



NOTES

Setting: at least 1.3 times the load induced pressure

ORDERING CODES

Quick code	Description	Pilot ratio	Main ports size	Standard setting (bar, Q=5 l/min)	Adjust. range (bar)	Pressure increase (bar/turn)
MN000008	MNDN-040-LLSV-09-G38-N300	9:1	V1,V2,C1,C2,T: G 3/8" C3: G 1/4"	150	100-300	119
MN000032	MNDN-040-LLSV-09-G38-N200	9:1	V1,V2,C1,C2,T: G 3/8" C3: G 1/4"	150	70-150	63
MN000033	MNDN-040-LLSV-03-G38-N300	3:1	V1,V2,C1,C2,T: G 3/8" C3: G 1/4"	150	100-300	119
MN000034	MNDN-040-LLSV-03-G38-N200	3:1	V1,V2,C1,C2,T: G 3/8" C3: G 1/4"	150	70-150	63