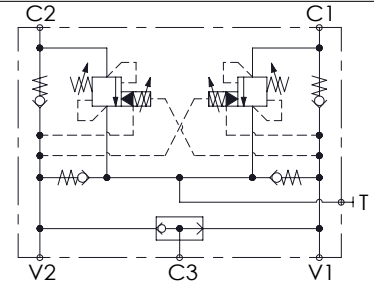
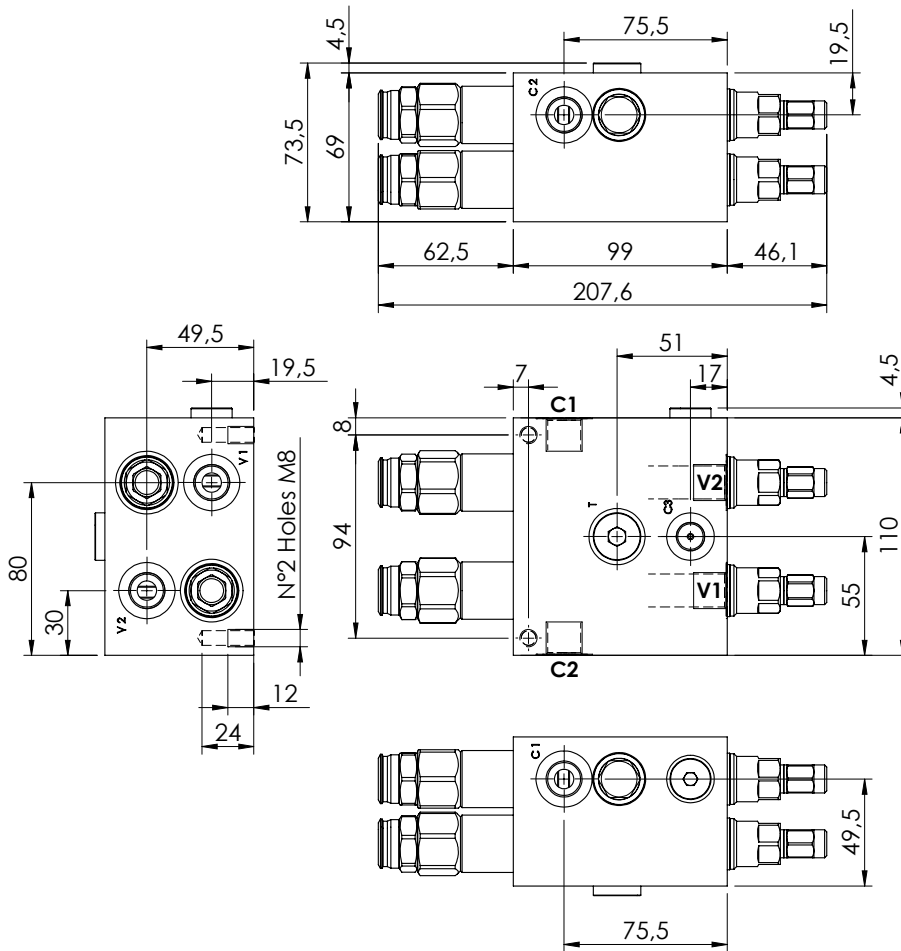
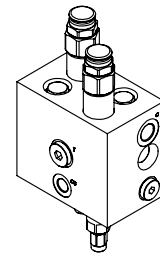


MOTION CONTROL

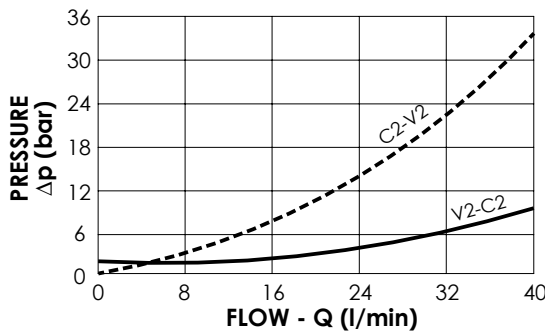
MNDN-040-LLPV

**SOFT STOP
DUAL SETTING
WITH BRAKE RELEASE**



SPECIFICATIONS

| | |
|--------------------------|-----------|
| Max. operating pressure: | 300 bar |
| Rated flow: | 40 l/min |
| Manifold: | Aluminium |
| Weight: | 2,77 kg |



NOTES

Setting: at least 1.3 times the load induced pressure

ORDERING CODES

| Quick code | Description | Pilot ratio | Main ports size | Standard setting (bar, Q=5 l/min) | Adjust. range (bar) | Pressure increase (bar/turn) |
|------------|---------------------------|-------------|--------------------------------------|-----------------------------------|---------------------|------------------------------|
| MN000019 | MNDN-040-LLPV-09-G38-N300 | 9:1 | V1,V2,C1,C2,T: G 3/8" C3 : G 1/4" | Start: 300 Brake:120 | 100-300 | 119 |
| MN000028 | MNDN-040-LLPV-09-G38-N200 | 9:1 | V1,V2,C1,C2,T: G 3/8" C3 : G 1/4" | Start: 200 Brake: 90 | 60-210 | 63 |
| | | | | | | |
| | | | | | | |
| | | | | | | |