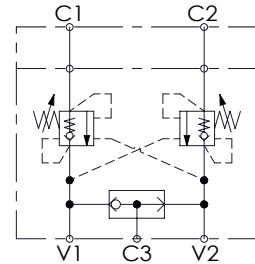
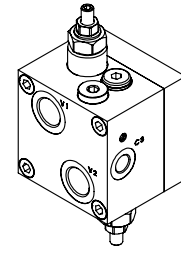
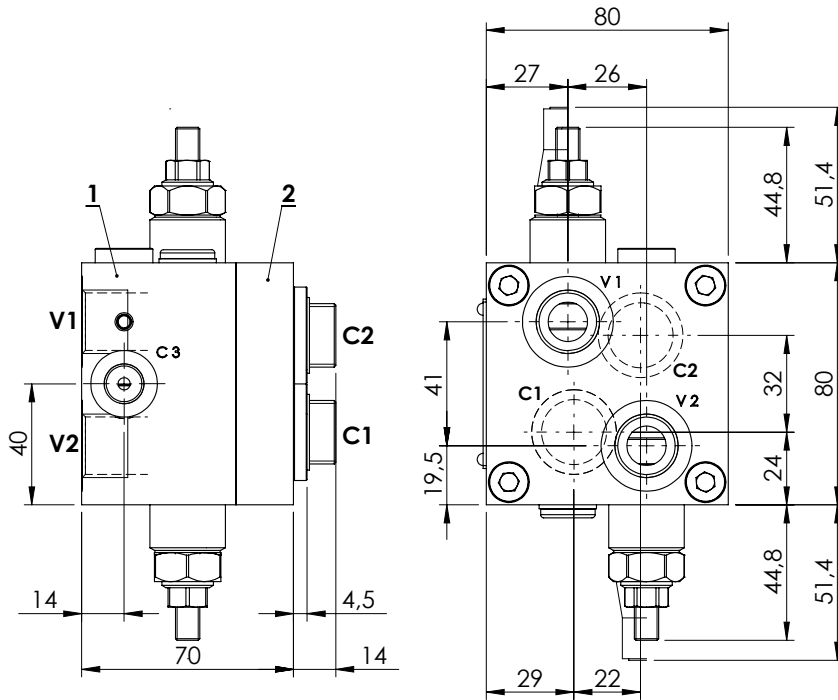


VALVES FOR MOTORS

**MBDN-060-LMSF**

**OVERCENTRE  
WITH BRAKE RELEASE**

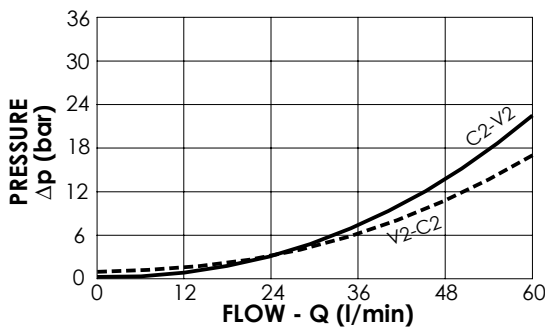


**SPECIFICATIONS**

Max. operating pressure:	250 bar
Rated flow:	60 l/min
Manifold:	Anodized Aluminium
Weight:	2,07 kg

**SEALING CAP**

Ordering code:  
**AT000020**



**NOTES**

Setting: at least 1.3 times the load induced pressure

Designed for OMS motors

Valve composed by:  
1.MB000520  
2.MP000012

**ORDERING CODES**

Quick code	Description	Pilot ratio	Main ports size	Standard setting (bar, Q=5 l/min)	Adjust. range (bar)	Pressure increase (bar/turn)
MB000036	MBDN-060-LMSF-04-G12-N200-NOMS	4,2:1	V1,V2: G 1/2" C1,C2: OMS flange C3: G 1/4"	200	60-210	62