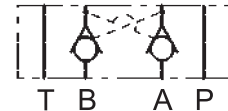




# LC04M VR

**Valvole modulari di ritegno semplici e pilotate**

*Modular direct and pilot operated check valves*



## CARATTERISTICHE TECNICHE

**Grandezza: NG4 CETOP RP 121 H-4.2-4 P02 (CETOP 2)**

**Portata massima: 20 l/min**

**Pressione massima d'esercizio: 310 bar**

**Rapporto di pilotaggio: 2,8:1**

## TECHNICAL CHARACTERISTICS

**Size: NG4 CETOP RP 121 H-4.2-4 P02 (CETOP 2)**

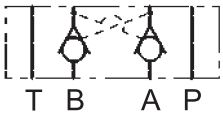
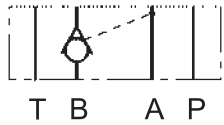
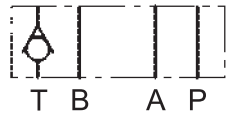
**Max flow: 20 l/min**

**Max operating pressure: 310 bar**

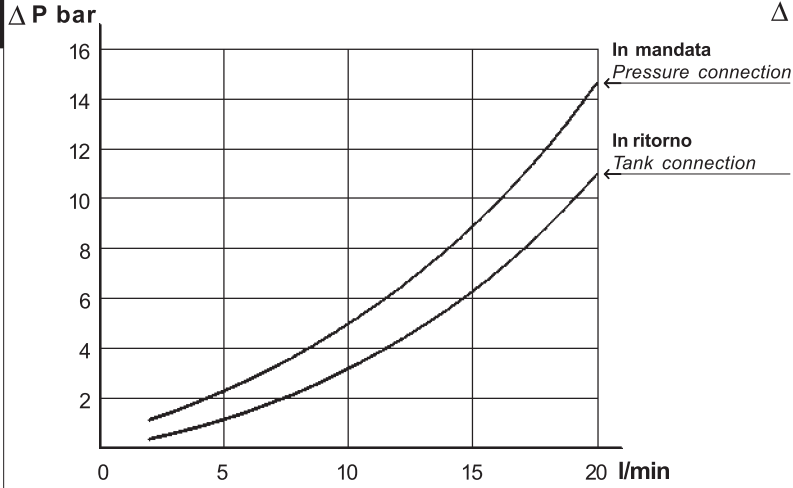
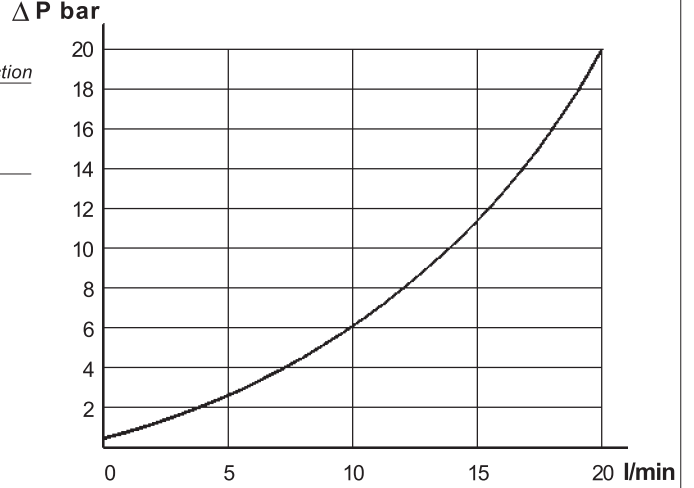
**Pilot ratio: 2,8:1**



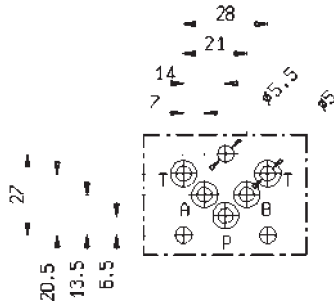
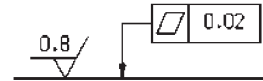
# TIPI DI VALVOLE • VALVES TYPES

**AB****0A****0B****0P****0T**

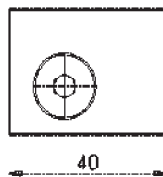
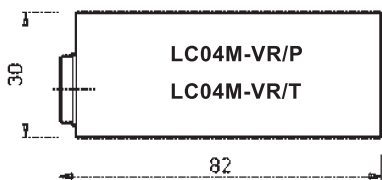
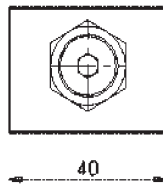
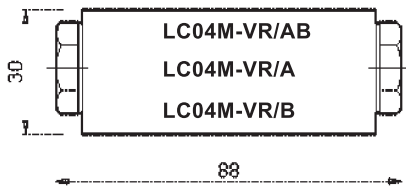
## CARATTERISTICHE TECNICHE • TECHNICAL FEATURES

**VR/AB****VR/P VR/T**

## GRANDEZZA • SIZE : NG4 CETOP RP 121H- 4.2- 4 P02 (CETOP 2)

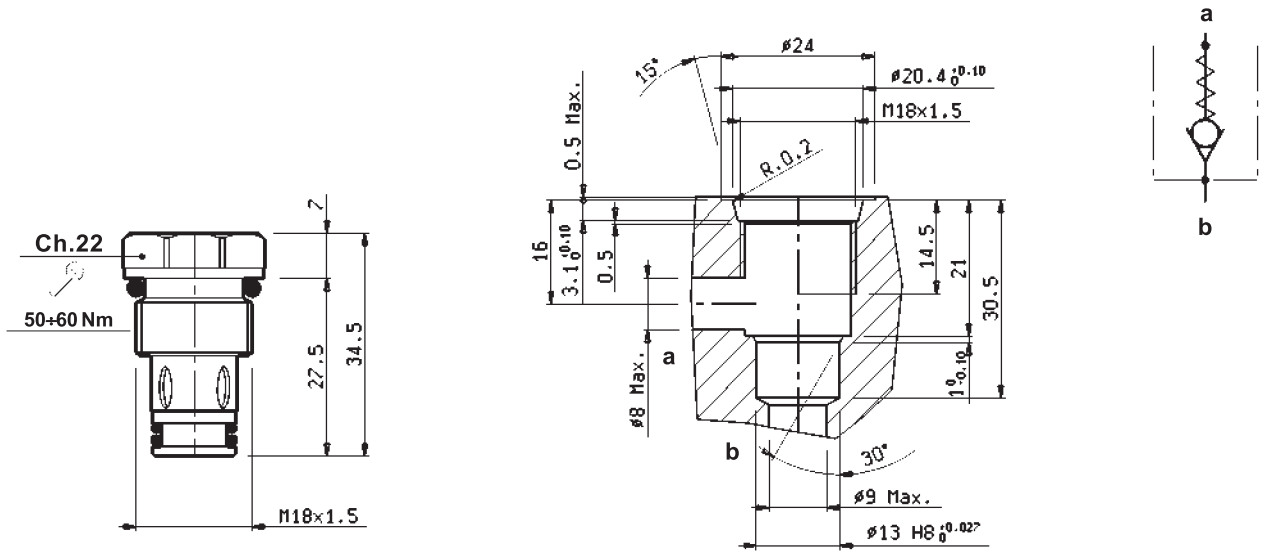
**Qualità superficie di attacco**  
Mounting plane quality

## DIMENSIONI DI INGOMBRO • OVER-ALL DIMENSIONS

**Peso**  
Weight

LC04M-VR/AB	0,65 kg
LC04M-VR/A	0,65 kg
LC04M-VR/B	0,65 kg
LC04M-VR/P	0,59 kg
LC04M-VR/T	0,59 kg

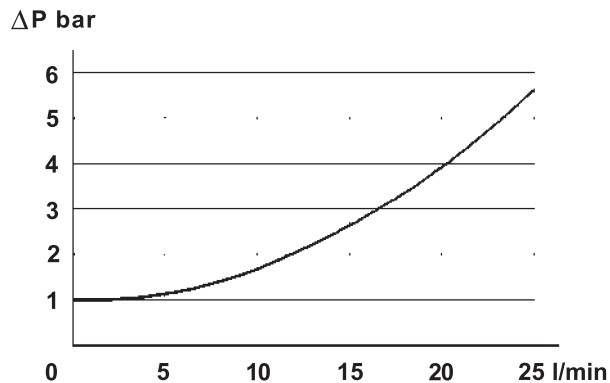
**VALVOLA UNIDIREZIONALE A CARTUCCIA • UNI-DIRECTIONAL CARTRIDGE VALVE**



Tipo Type	Diam. nominale di passaggio Ø Size mm	Portata Max. Max. flow l/min	Pressione Max. Max. pressure bar	Pressione di apertura Cracking pressure bar	Cavità Cavity n°	Peso Weight kg
<b>VU4</b>	6	25	310	1	14	0,050

**CARATTERISTICHE TECNICHE • TECHNICAL FEATURES**

**Diagramma caduta di pressione della cartuccia**  
*Cartridge pressure drop diagram*



**CODICE DI ORDINAZIONE • ORDERING CODE**

**L 6 0 4 0 0 0 W 0 1 0 0 Z**

<b>W</b>	<b>TIPI DI VALVOLE VALVES TYPE</b>
<b>AB</b>	LC04M-VR/AB
<b>0A</b>	LC04M-VR/A
<b>0B</b>	LC04M-VR/B
<b>0P</b>	LC04M-VR/P
<b>0T</b>	LC04M-VR/T

<b>Z</b>	<b>VERSIONE VERSION</b>
<b>00</b>	STANDARD
<b>0V</b>	GUARNIZIONI IN VITON SEALS IN VITON