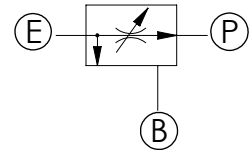
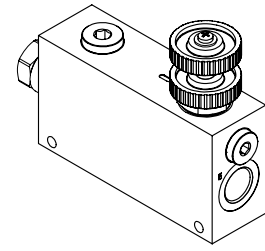
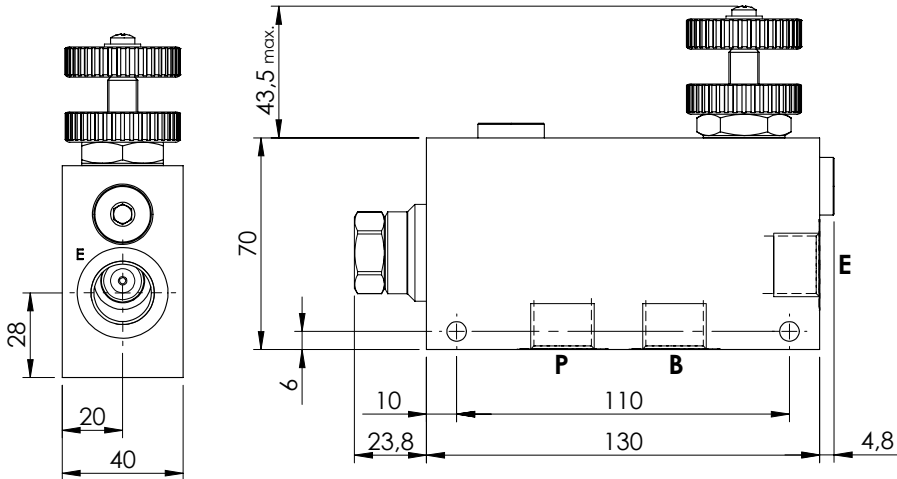
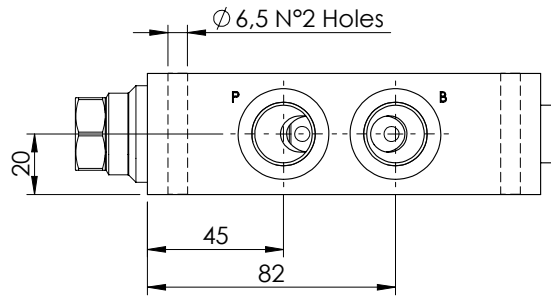


FLOW REGULATOR

MFPT-090-RVTR

**PRESSURE COMPENSATED
PRIORITY FLOW REGULATOR**



SPECIFICATIONS

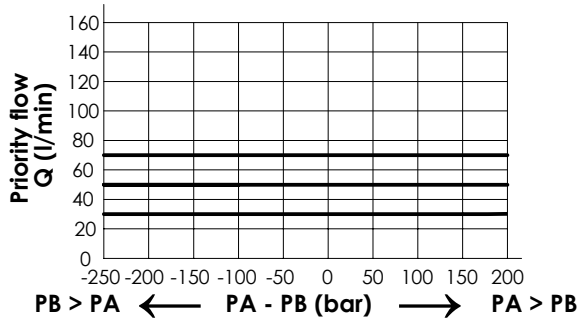
Max. operating pressure:	210 bar
Rated flow:	90 l/min
Manifold:	Aluminium
Weight:	1,2 kg

ADJUSTMENT OPTIONS



Handknob and locknut

NOTES



ORDERING CODES

Quick code	Description	Main ports size	Max. inlet flow (l/min)	Max. regulated flow (l/min)	Adjustment options
MF000121	MFPT-090-RVTR-70-G12-N210	E,P,T: G1/2"	90 l/min	70 l/min	Handknob and locknut
MF000136	MFPT-090-RVTR-70-G38-N210	E,P,T: G3/8"	90 l/min	70 l/min	Handknob and locknut