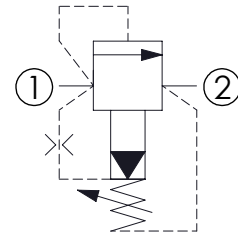
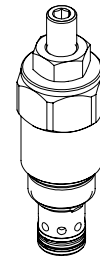
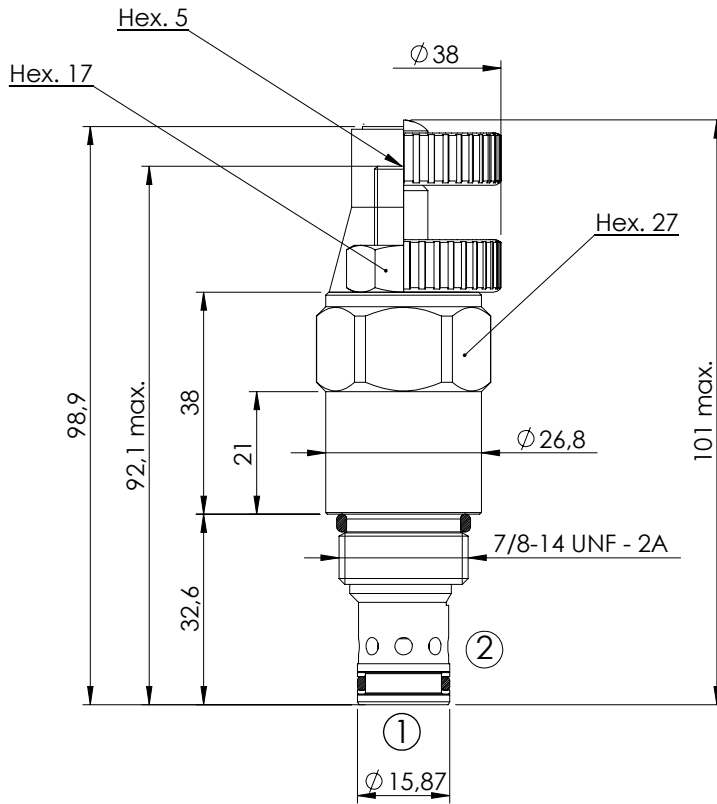


RELIEF VALVE

CPLN-120-PSNA

PILOT OPERATED
SPOOL TYPE



SPECIFICATIONS

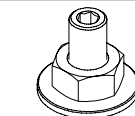
Max. operating pressure:	350 bar
Rated flow:	120 l/min
Cavity:	SAE-10-2N
Weight:	0,24 kg
Installation torque:	50 - 60 Nm
Leakage:	200 cm ³ @ 200 bar
Seal kit:	RB700082

SEALING CAP

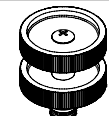
Ordering code:
AT000021



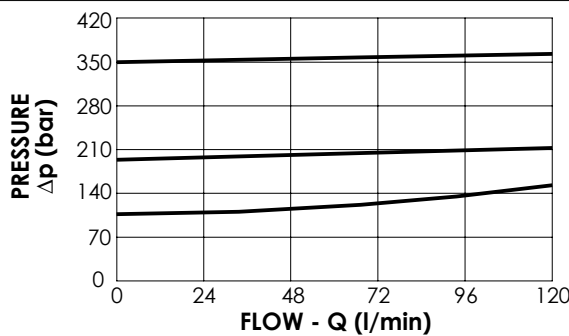
OPTIONS



Adjustment
with Screw



Adjustment
with Handknob



ORDERING CODES

Quick code	Description	Standard setting (bar, Q=5 l/min)	Adjust. range (bar)	Pressure increase (bar/turn)	Option
CP000009	CPLN-120-PSNA-HN-S10-N350	350	140-350	114	Adjustment with Screw
CP000060	CPLN-120-PSNA-HN-S10-N200	200	70-210	69	Adjustment with Screw
CP000059	CPLN-120-PSNA-HN-S10-N100	100	35-120	37	Adjustment with Screw
CP000064	CPLN-120-PSNA-VN-S10-N350	350	140-350	114	Adjustment with Handknob
CP000065	CPLN-120-PSNA-VN-S10-N200	200	70-210	69	Adjustment with Handknob
CP000066	CPLN-120-PSNA-VN-S10-N100	100	35-120	37	Adjustment with Handknob