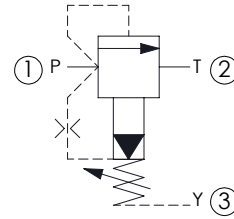
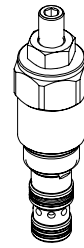
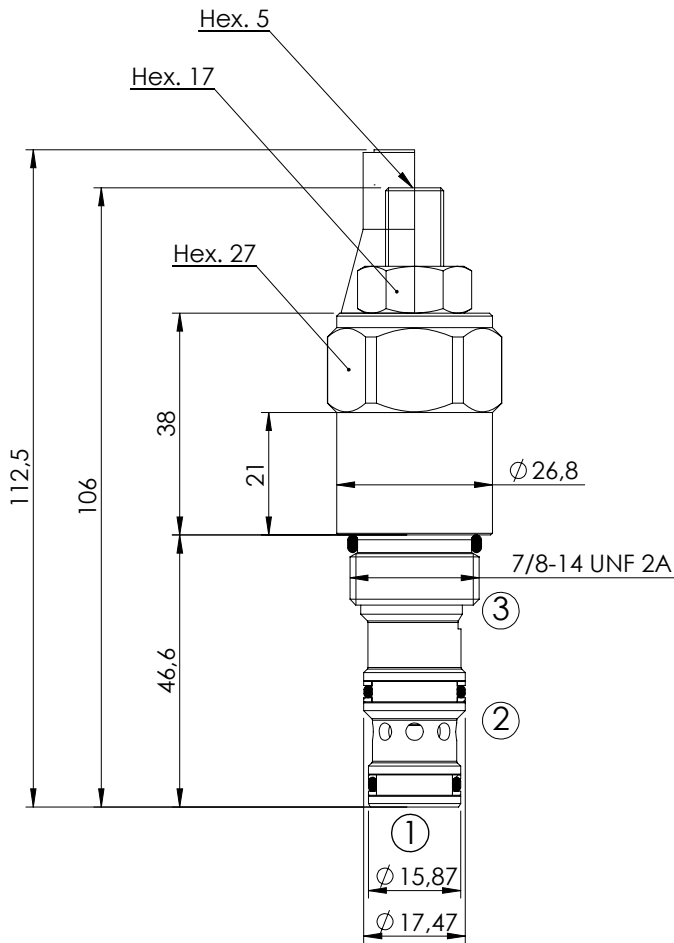


RELIEF VALVE

**CPLV-120-PSNA**

PILOT OPERATED  
SPOOL TYPE  
SEPARATE TANK LINE



**SPECIFICATIONS**

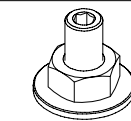
Max. operating pressure:	350 bar
Rated flow:	120 l/min
Cavity:	SAE-10-3N
Weight:	0,26 kg
Installation torque:	50 - 60 Nm
Leakage:	200 cm <sup>3</sup> @ 200 bar
Seal kit:	RB700092

**SEALING CAP**

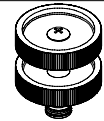
Ordering code:  
AT000021



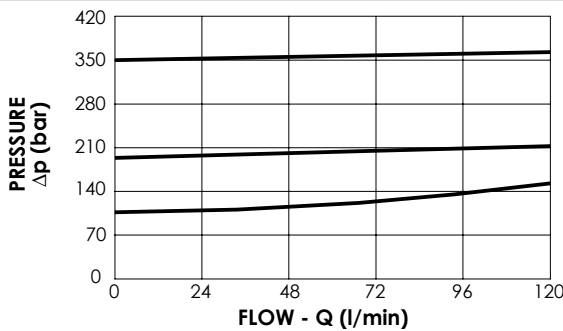
**OPTIONS**



Adjustment  
with Screw



Adjustment  
with Handknob



**ORDERING CODES**

Quick code	Description	Standard setting (bar, Q=5 l/min)	Adjust. range (bar)	Pressure increase (bar/turn)	Option
CP000228	CPLV-120-PSNA-HN-S10-N350	350	140-350	114	Adjustment with Screw
CP000427	CPLV-120-PSNA-HN-S10-N200	200	70-210	69	Adjustment with Screw
CP000428	CPLV-120-PSNA-HN-S10-N100	100	35-120	37	Adjustment with Screw
CP000429	CPLV-120-PSNA-VN-S10-N350	350	140-350	114	Adjustment with Handknob
CP000430	CPLV-120-PSNA-VN-S10-N200	200	70-210	69	Adjustment with Handknob
CP000431	CPLV-120-PSNA-VN-S10-N100	100	35-120	37	Adjustment with Handknob