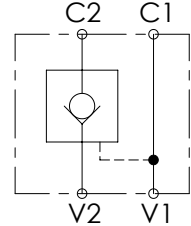
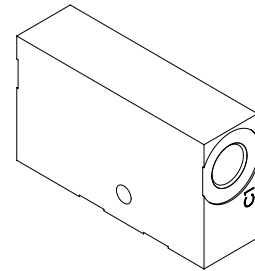
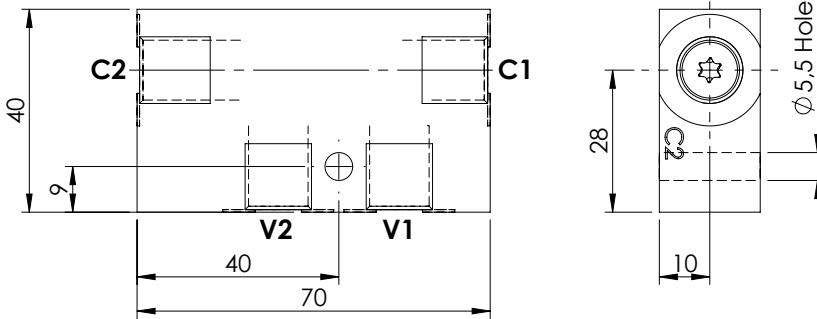
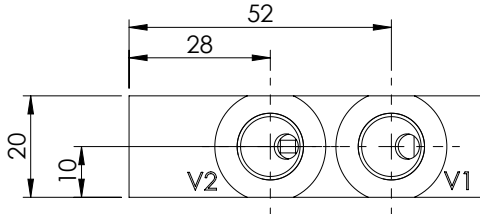


PILOT OPERATED CHECK VALVE

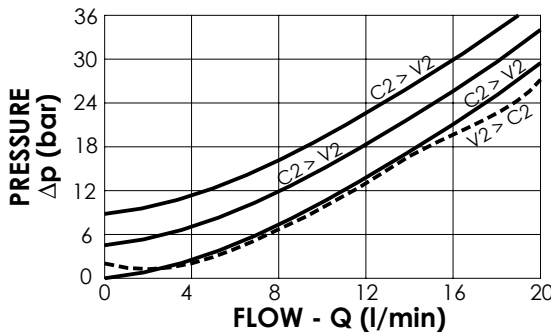
MCSN-020-SLAC

SINGLE ACTING



SPECIFICATIONS

Max. operating pressure:	350 bar
Rated flow:	20 l/min
Manifold:	Steel
Weight:	0,36 kg



ORDERING CODES

Quick code	Description	Main ports size	Pilot ratio	Cracking pressure (bar)	O-Ring on pilot piston
MC000059	MCSN-020-SLAC-04-G14-N003	V1,V2,C1,C2 : G 1/4"	4:1	3	YES
MC000094	MCSN-020-SLAC-04-G14-N008	V1,V2,C1,C2 : G 1/4"	4:1	8	YES
MC000097	MCSN-020-SLAC-07-G14-N005	V1,V2,C1,C2 : G 1/4"	7:1	5	YES

1	Relief
2	Pressure reducing
3	Sequence
4	Check
5	Pilot operated check
6	Overcentre
7	Regenerative
8	Hydr. motors, actuators & winch valves
9	Motion control
10	Check and metering
11	Shuttle and logic elements
12	Flow dividers & combiners