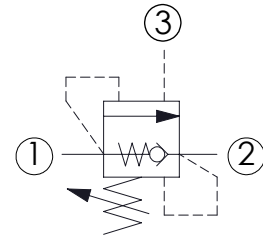
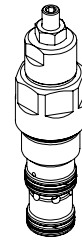
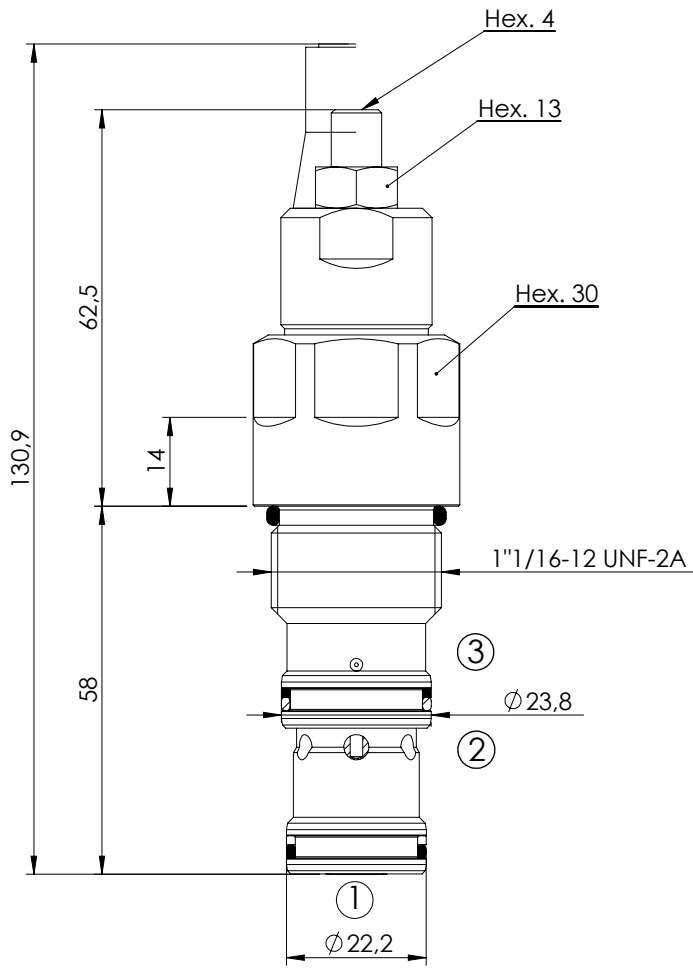


OVERCENTRE VALVE

CBSN-120-DAGH

DIFFERENTIAL AREA
POPPET TYPE

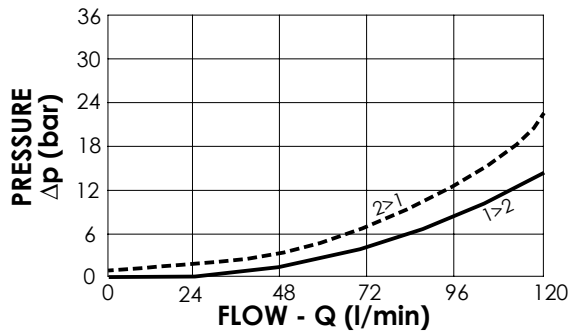
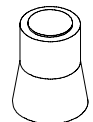


SPECIFICATIONS

Max. operating pressure:	350 bar
Rated flow:	120 l/min
Cavity:	SAE-12-3C
Weight:	0,38 kg

SEALING CAP

Ordering code:
AT000020



NOTES

Setting: at least 1.3 times the load induced pressure

Installation torque: **80 - 95 Nm**

Seal kit: **RA700088**

Turn clockwise to increase the setting

ORDERING CODES

Quick code	Description	Pilot ratio	Standard setting (bar, Q=5 l/min)	Adjust. range (bar)	Pressure increase (bar/turn)
CB000045	CBSN-120-DAGH-04-S12-N350	4:1	350	140 - 350	174
CB000066	CBSN-120-DAGH-04-S12-N200	4:1	200	70 - 210	58
CB000062	CBSN-120-DAGH-08-S12-N350	8:1	350	140 - 350	72
CB000067	CBSN-120-DAGH-08-S12-N200	8:1	200	70 - 210	44