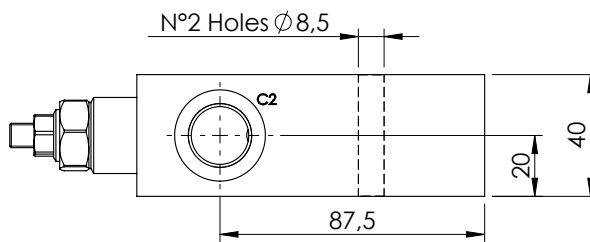
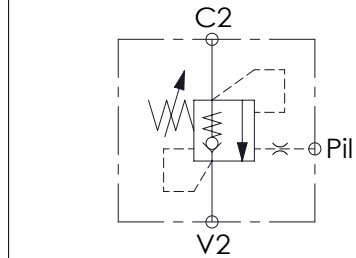
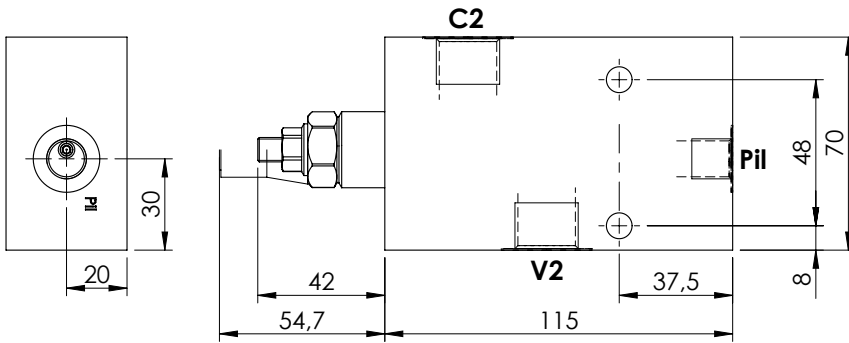
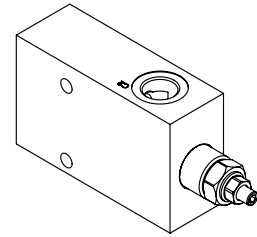
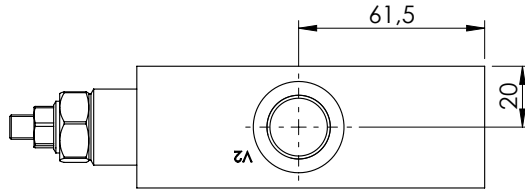


OVERCENTRE VALVE

MBSN-060-ZLNA

SINGLE ACTING
IN LINE PORTS

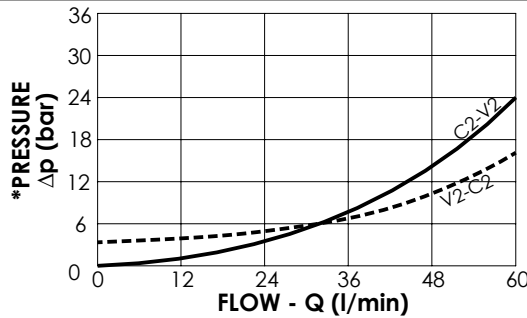
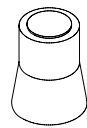


SPECIFICATIONS

| | |
|--------------------------|----------|
| Max. operating pressure: | 350 bar |
| Rated flow: | 60 l/min |
| Weight: | 0,9 kg |

SEALING CAP

Ordering code:
AT000020



NOTES

Setting: at least 1.3 times the load induced pressure

ORDERING CODES

| Quick code | Description | Pilot ratio | Manifold material | Main ports size | Standard setting (bar, Q=5 l/min) | Adjust. range (bar) | Pressure increase (bar/turn) |
|------------|---------------------------|-------------|-------------------|------------------------------|-----------------------------------|---------------------|------------------------------|
| MB000579 | MBSN-060-ZLNA-04-G12-N350 | 4,2:1 | Aluminium | C2,V2: G 1/2" Pil: G 1/4" | 350 | 110-350 | 138 |
| MB000580 | MBSN-060-ZLNA-04-G12-N200 | 4,2:1 | Aluminium | C2,V2: G 1/2" Pil: G 1/4" | 200 | 60-210 | 62 |
| MB000581 | MBSN-060-ZLNA-07-G12-N350 | 7:1 | Aluminium | C2,V2: G 1/2" Pil: G 1/4" | 350 | 85-350 | 106 |
| MB000582 | MBSN-060-ZLNA-07-G12-N250 | 7:1 | Aluminium | C2,V2: G 1/2" Pil: G 1/4" | 250 | 40-250 | 46 |
| | | | | | | | |
| | | | | | | | |
| | | | | | | | |
| | | | | | | | |