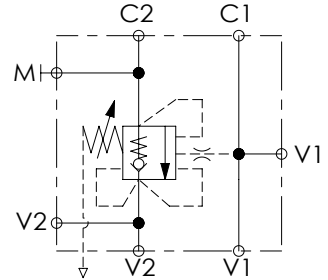
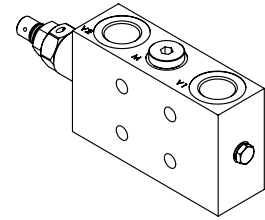
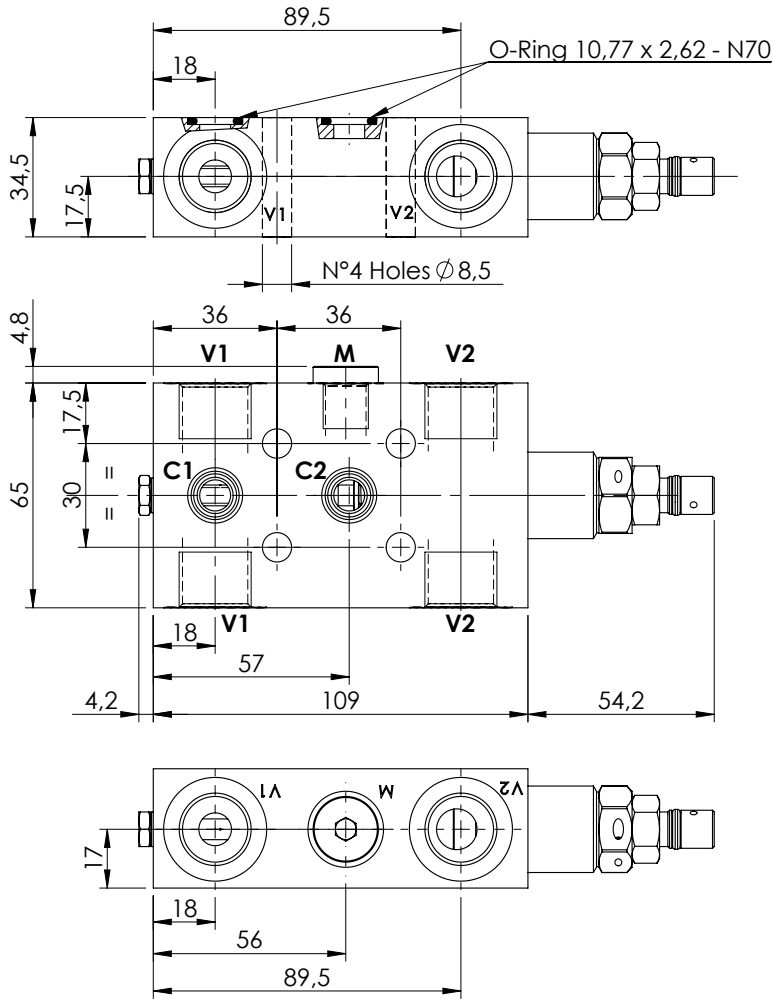


OVERCENTRE VALVE

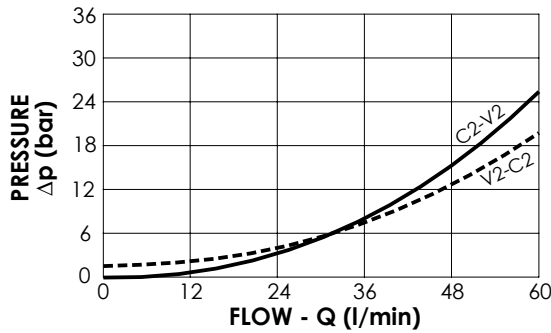
MBSP-060-ABNP

**SINGLE ACTING
TWO FLANGED PORTS
RELIEF COMPENSATED**



SPECIFICATIONS

Max. operating pressure:	350 bar
Rated flow:	60 l/min
Manifold:	Steel
Weight:	1,72 kg



NOTES

Setting: at least 1.3 times the load induced pressure

ORDERING CODES

Quick code	Description	Pilot ratio	Main ports size	Standard setting (bar, Q=5 l/min)	Adjust. range (bar)	Pressure increase (bar/turn)
MB000335	MBSP-060-ABNP-04-G12-N350	4,2:1	V1, V2 :G1/2" M:G1/4" C1, C2 : Ø9	350	100-350	138