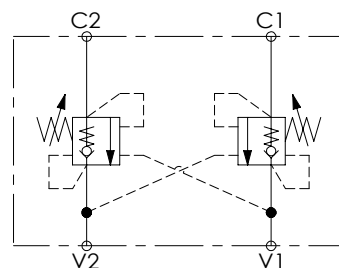
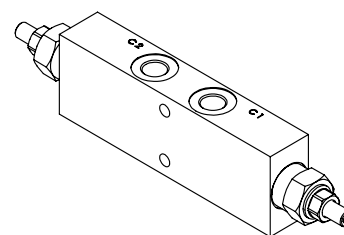
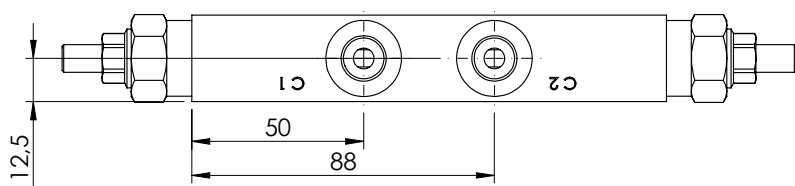
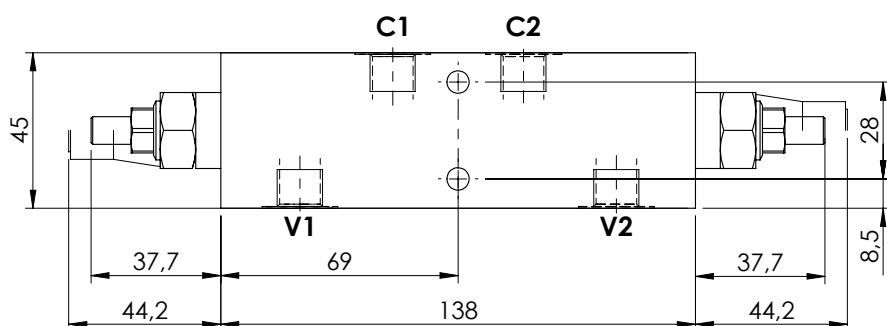
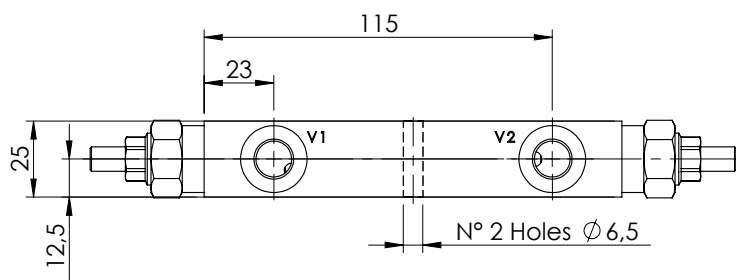


OVERCENTRE VALVE

**MBDN-040-ALNR**

DOUBLE ACTING



**SPECIFICATIONS**

Max. operating pressure: 350 bar

Rated flow: 40 l/min

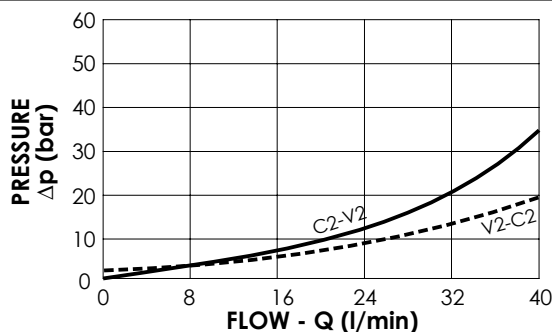
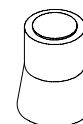
Manifold: Steel

Weight: 1,23 kg

**SEALING CAP**

Ordering code:

AT000020



**NOTES**

Setting: at least 1.3 times the load induced pressure

**ORDERING CODES**

Quick code	Description	Pilot ratio	Main ports size	Standard setting (bar, Q=5 l/min)	Adjust. range (bar)	Pressure increase (bar/turn)
MB000072	MBDN-040-ALNR-04-G14-N350	4,1:1	V1, V2: G1/4" C1, C2: G1/4"	350	100-350	184
MB000873	MBDN-040-ALNR-04-G14-N200	4,1:1	V1, V2: G1/4" C1, C2: G1/4"	200	60-210	83
MB000381	MBDN-040-ALNR-08-G14-N350	7,5:1	V1, V2: G1/4" C1, C2: G1/4"	350	100-350	138