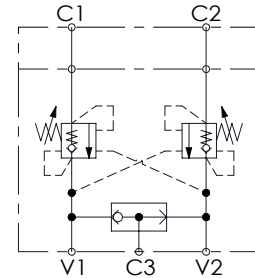
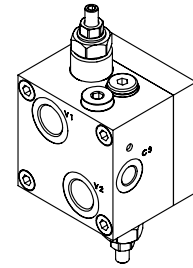
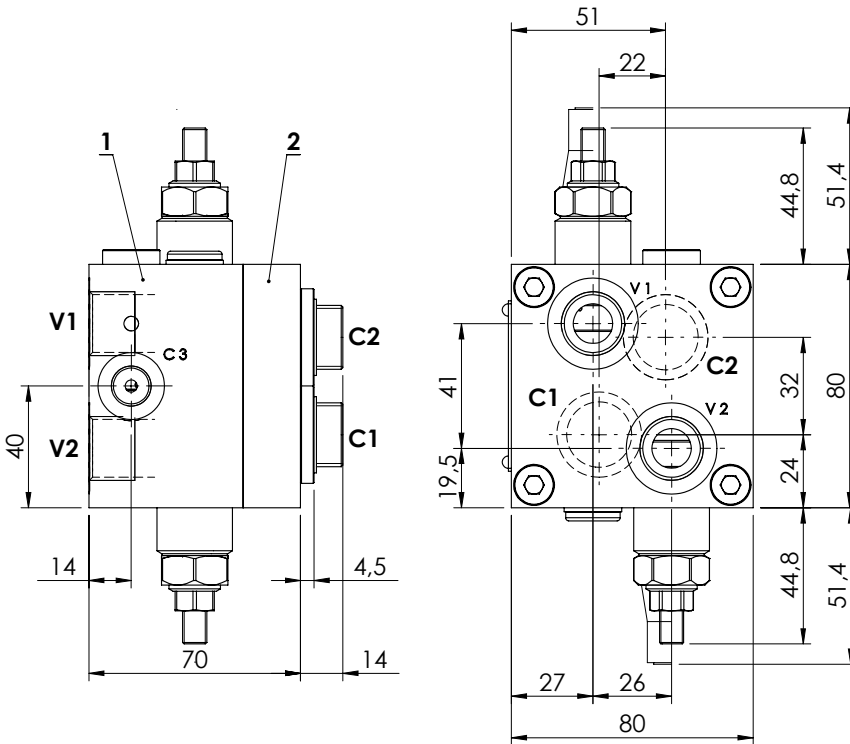


VALVES FOR MOTORS

**MBDN-060-AMSF**

**OVERCENTRE  
WITH BRAKE RELEASE**

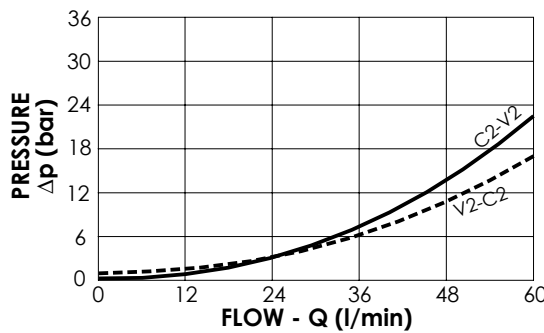
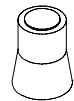


**SPECIFICATIONS**

Max. operating pressure:	350 bar
Rated flow:	60 l/min
Manifold:	Steel
Weight:	3,44 kg

**SEALING CAP**

Ordering code:  
**AT000020**



**NOTES**

Setting: at least 1.3 times the load induced pressure

Designed for  
SAM HYDRAULIC HR/OMS motors

Valve composed by:  
1.MB000619  
2.MP000030

**ORDERING CODES**

Quick code	Description	Pilot ratio	Main ports size	Standard setting (bar, Q=5 l/min)	Adjust. range (bar)	Pressure increase (bar/turn)
MB000319	MBDN-060-AMSF-04-G12-N200-SH HR	4,2:1	V1,V2: G 1/2" C1, C2: Sam Hydraulic HR /OMS C3: G 1/4"	200	60-210	62