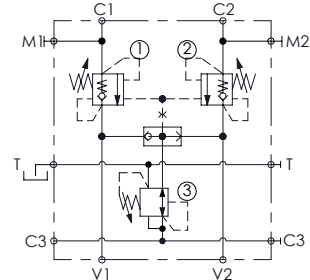
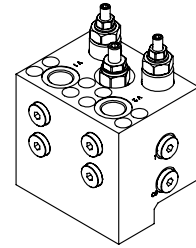
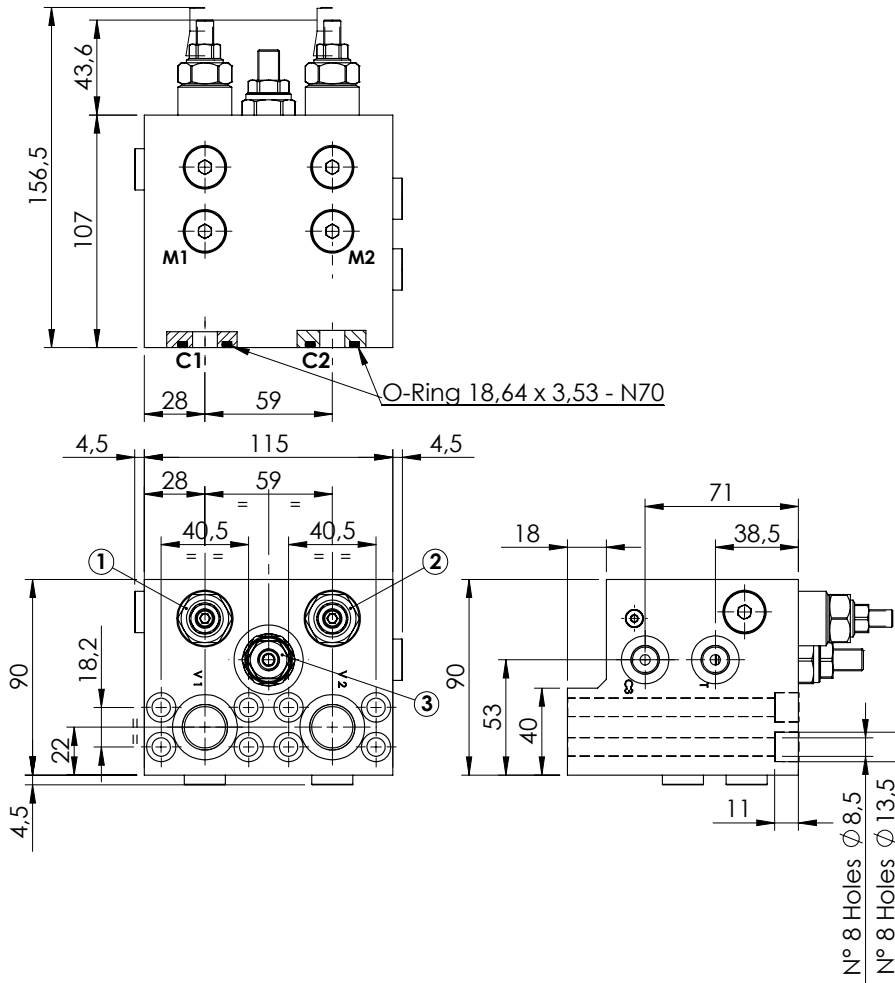


VALVES FOR MOTORS

MBDN-060-AMSR

OVERCENTRE
WITH BRAKE RELEASE

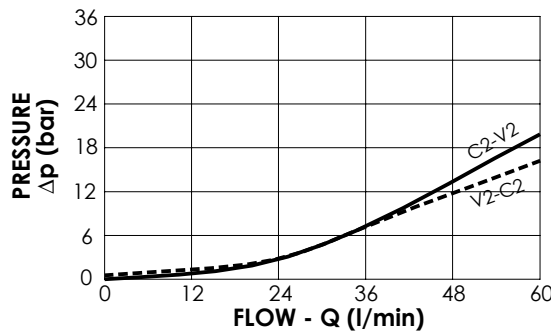
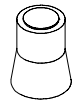


SPECIFICATIONS

Max. operating pressure:	420 bar
Rated flow:	60 l/min
Manifold:	Steel
Weight:	7,04 kg

SEALING CAP

Ordering code:
AT000020



NOTES

Setting: at least 1.3 times the load induced pressure
Designed for REXROTH A2FE 28-32 motors

ORDERING CODES

Quick code	Description	Pilot ratio	Main ports size	Standard setting (bar, Q=5 l/min)	Adjust. range (bar)	Pressure increase (bar/turn)
MB000483	MBDN-060-AMSR-11-S12-N420	11:1	V1,V2:G1/2" C1,C2:1/2 SAE 6000 C3,T,M1,M2:G1/4"	① ② :350 ③ :50	① ② :80-350 ③ :10-60	① ② :161 ③ :6