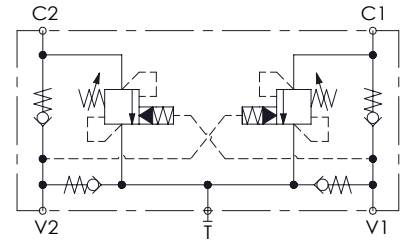
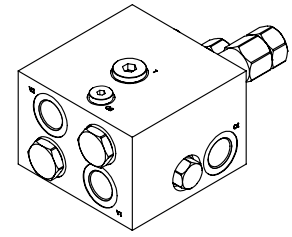
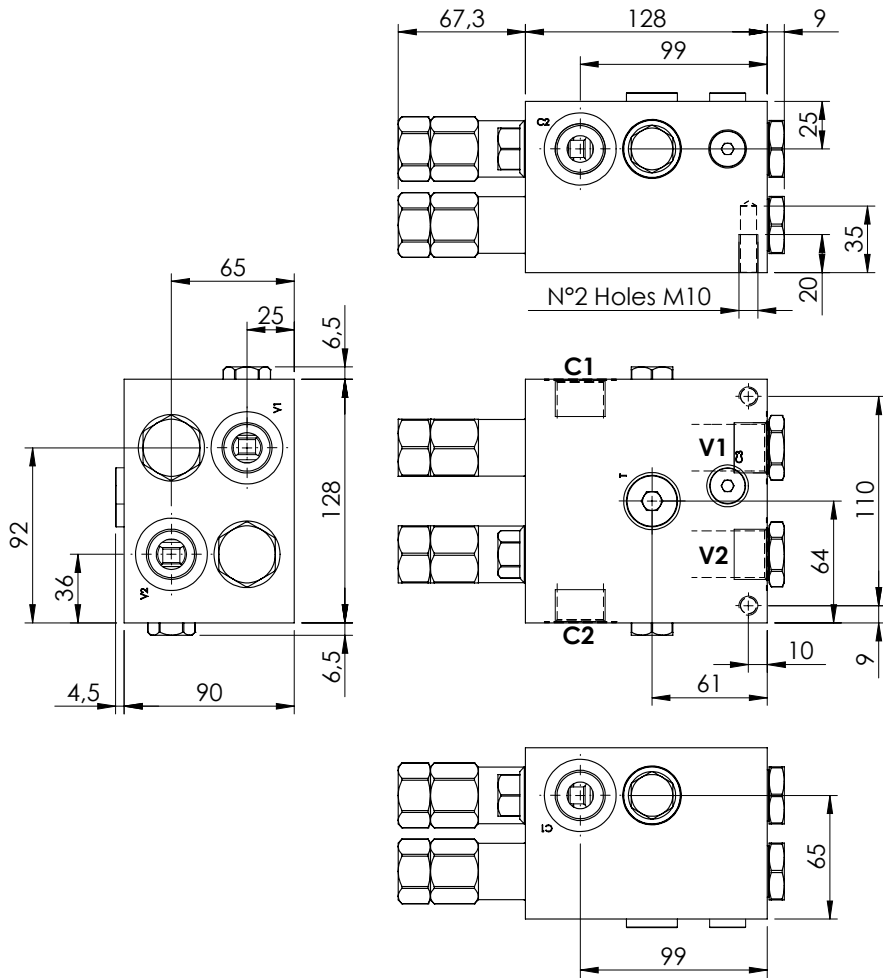


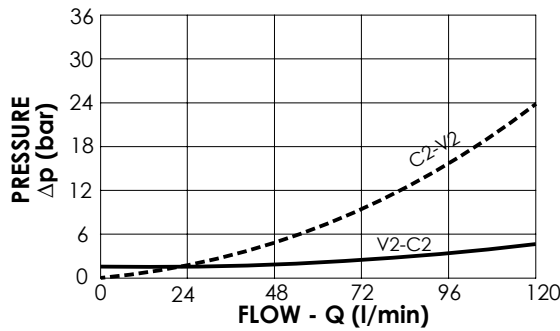
MNDN-120-LLST

STABILIZED



SPECIFICATIONS

Max. operating pressure:	300 bar
Rated flow:	120 l/min
Manifold:	Aluminium
Weight:	5,05 kg



NOTES

Setting: at least 1.3 times the load induced pressure

ORDERING CODES

Quick code	Description	Pilot ratio	Main ports size	Standard setting (bar, Q=5 l/min)	Adjust. range (bar)	Pressure increase (bar/turn)
MN000013	MNDN-120-LLST-08-G34-N300	8:1	V1,V2,C1,C2 : G3/4" T : G 1/2"	150	100-300	111
MN000012	MNDN-120-LLST-03-G34-N300	3:1	V1,V2,C1,C2 : G3/4" T : G 1/2"	150	70-210	73