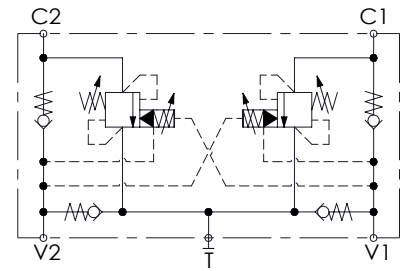
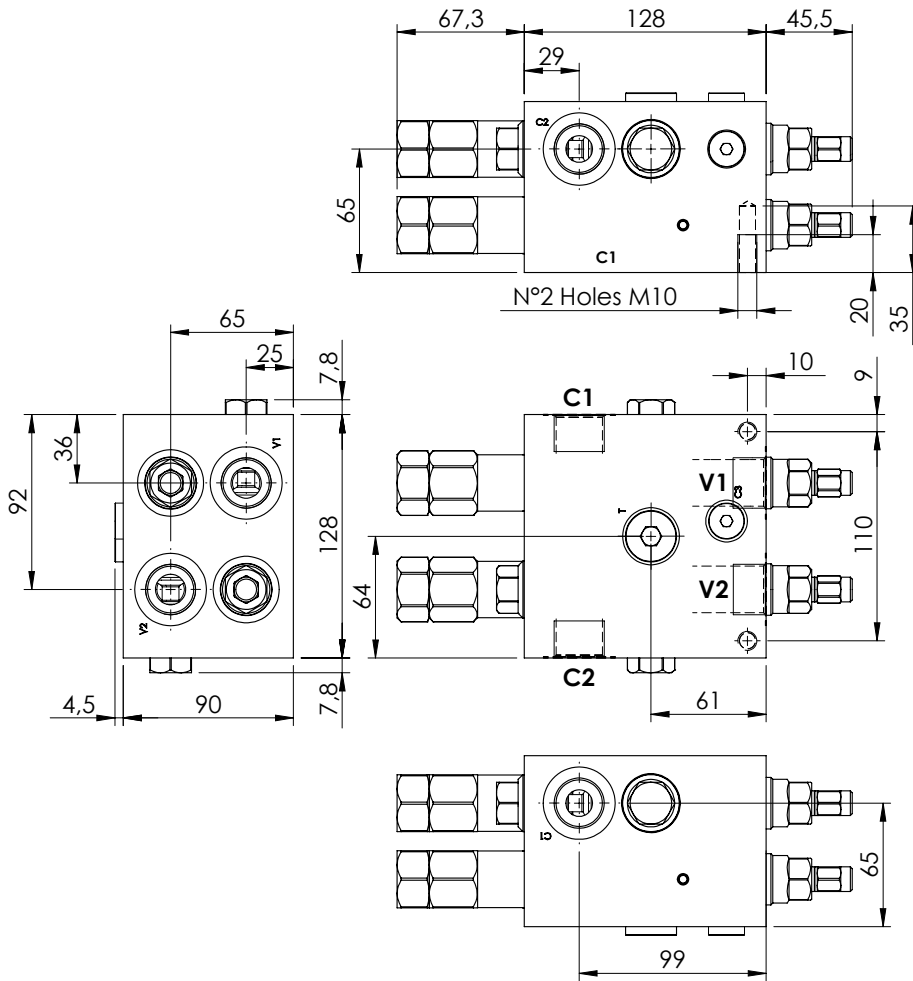
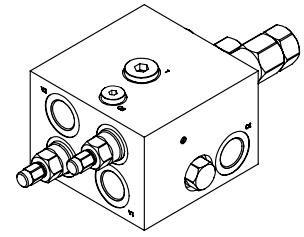


MOTION CONTROL

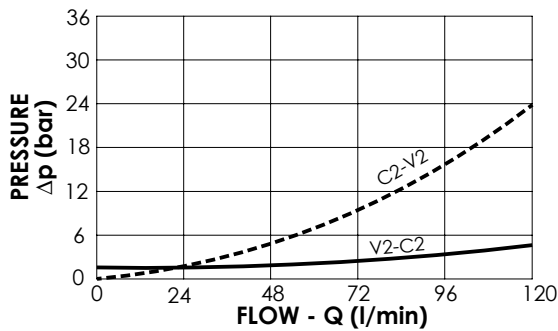
MNDN-120-LLPT

SOFT STOP
DUAL SETTING



SPECIFICATIONS

Max. operating pressure:	300 bar
Rated flow:	120 l/min
Manifold:	Aluminium
Weight:	5,13 kg



NOTES

Setting: at least 1.3 times the load induced pressure

ORDERING CODES

Quick code	Description	Pilot ratio	Main ports size	Standard setting (bar, Q=5 l/min)	Adjust. range (bar)	Pressure increase (bar/turn)
MN000017	MNDN-120-LLPT-08-G34-N300	8:1	V1,V2,C1,C2 : G3/4" T : G 1/2"	Start: 300 Brake: 120	100-300	107
MN000047	MNDN-120-LLPT-03-G34-N300	3:1	V1,V2,C1,C2 : G3/4" T : G 1/2"	Start: 300 Brake: 120	100-300	107
MN000016	MNDN-120-LLPT-03-G34-N200	3:1	V1,V2,C1,C2 : G3/4" T : G 1/2"	Start: 180 Brake: 90	70-210	73