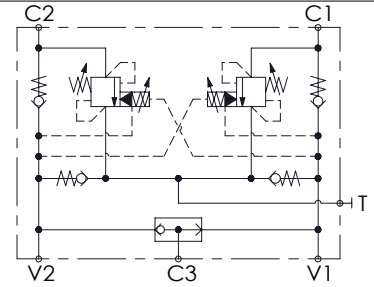
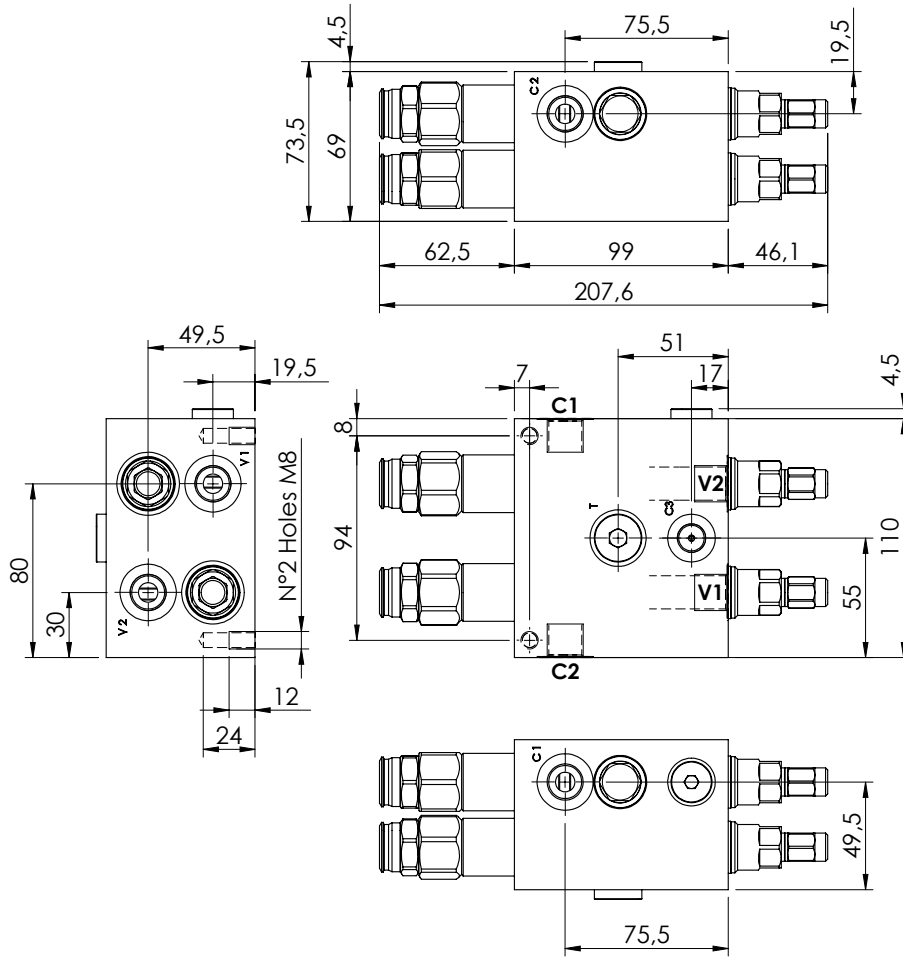
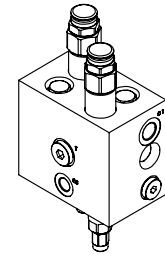


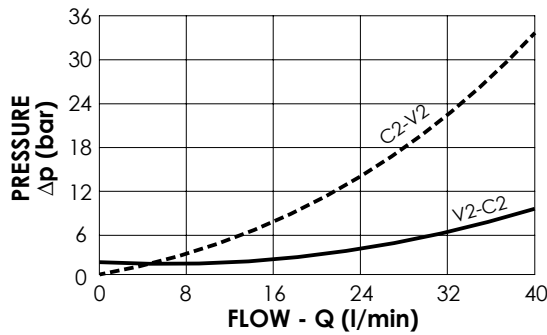
MNDN-040-LLPV

**SOFT STOP
DUAL SETTING
WITH BRAKE RELEASE**



SPECIFICATIONS

Max. operating pressure:	300 bar
Rated flow:	40 l/min
Manifold:	Aluminium
Weight:	2,77 kg



NOTES

Setting: at least 1.3 times the load induced pressure

ORDERING CODES

Quick code	Description	Pilot ratio	Main ports size	Standard setting (bar, Q=5 l/min)	Adjust. range (bar)	Pressure increase (bar/turn)
MN000019	MNDN-040-LLPV-09-G38-N300	9:1	V1,V2,C1,C2,T: G 3/8" C3: G 1/4"	Start: 300 Brake: 120	100-300	119
MN000028	MNDN-040-LLPV-09-G38-N200	9:1	V1,V2,C1,C2,T: G 3/8" C3: G 1/4"	Start: 200 Brake: 90	60-210	63