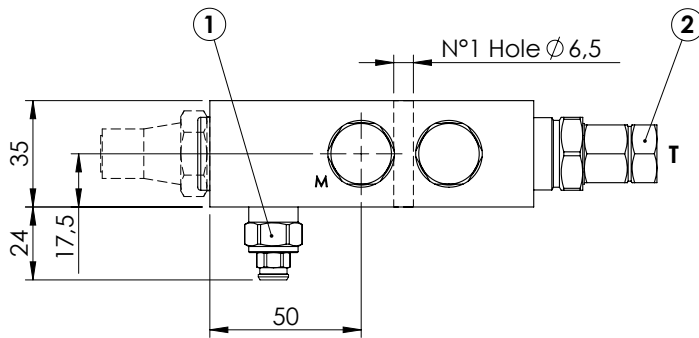
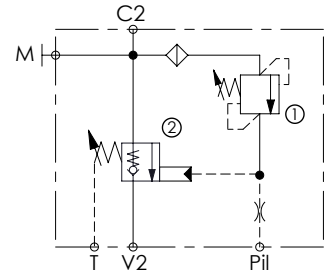
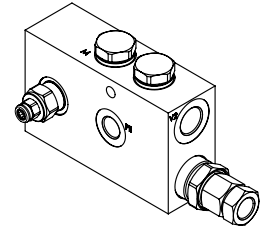
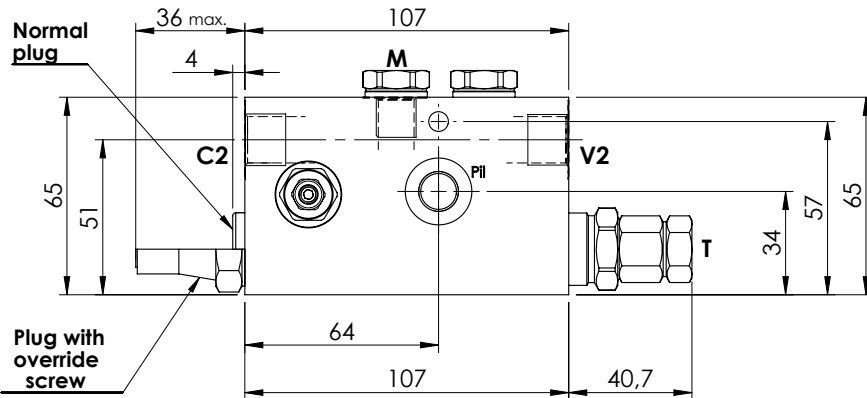


CHECK AND METERING VALVE

**MLST-040-ALGR**

IN LINE VERSION  
RIGHT VERSION

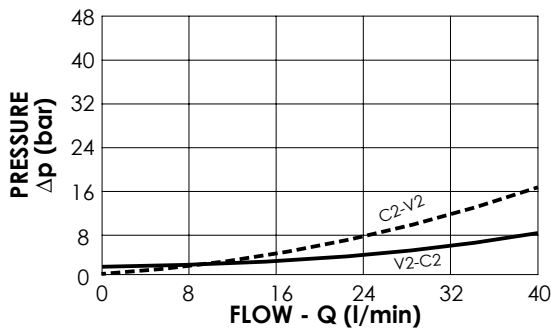


**SPECIFICATIONS**

|                          |          |
|--------------------------|----------|
| Max. operating pressure: | 420 bar  |
| Rated flow:              | 40 l/min |
| Manifold:                | Steel    |
| Weight:                  | 1,86 kg  |

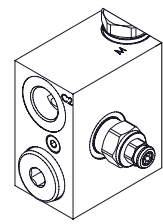
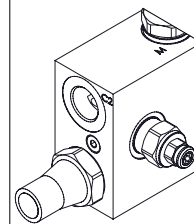
**NOTES**

When correctly adjusted for the specific excavator installation, these valves meet the requirement of ISO 8643



Plug with override screw

Normal plug



**ORDERING CODES**

| Quick code | Description               | Main ports size                      | Plug with override screw | Standard setting (bar)              | Adjust. range (bar) | Pressure increase (bar/turn) |
|------------|---------------------------|--------------------------------------|--------------------------|-------------------------------------|---------------------|------------------------------|
| ML000143   | MLST-040-ALGR-00-G38-N420 | V2,C2: G 3/8"<br>Pii,T,M: G 1/4"     | No                       | ① 350 Q=5 l/min<br>② 7.5 Crack. pr. | ① 150-420<br>② 3-15 | ① 236<br>② 6.7               |
| ML000144   | MLST-040-ALGR-00-G38-E420 | V2,C2: G 3/8"<br>Pii,T,M: G 1/4"     | Yes                      | ① 350 Q=5 l/min<br>② 7.5 Crack. pr. | ① 150-420<br>② 3-15 | ① 236<br>② 6.7               |
| ML000185   | MLST-040-ALGR-00-J38-N420 | V2,C2: JIS 3/8"<br>Pii,T,M: JIS 1/4" | No                       | ① 350 Q=5 l/min<br>② 7.5 Crack. pr. | ① 150-420<br>② 3-15 | ① 236<br>② 6.7               |
| ML000186   | MLST-040-ALGR-00-J38-E420 | V2,C2: JIS 3/8"<br>Pii,T,M: JIS 1/4" | Yes                      | ① 350 Q=5 l/min<br>② 7.5 Crack. pr. | ① 150-420<br>② 3-15 | ① 236<br>② 6.7               |