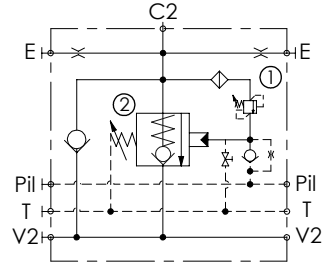
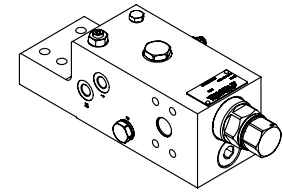
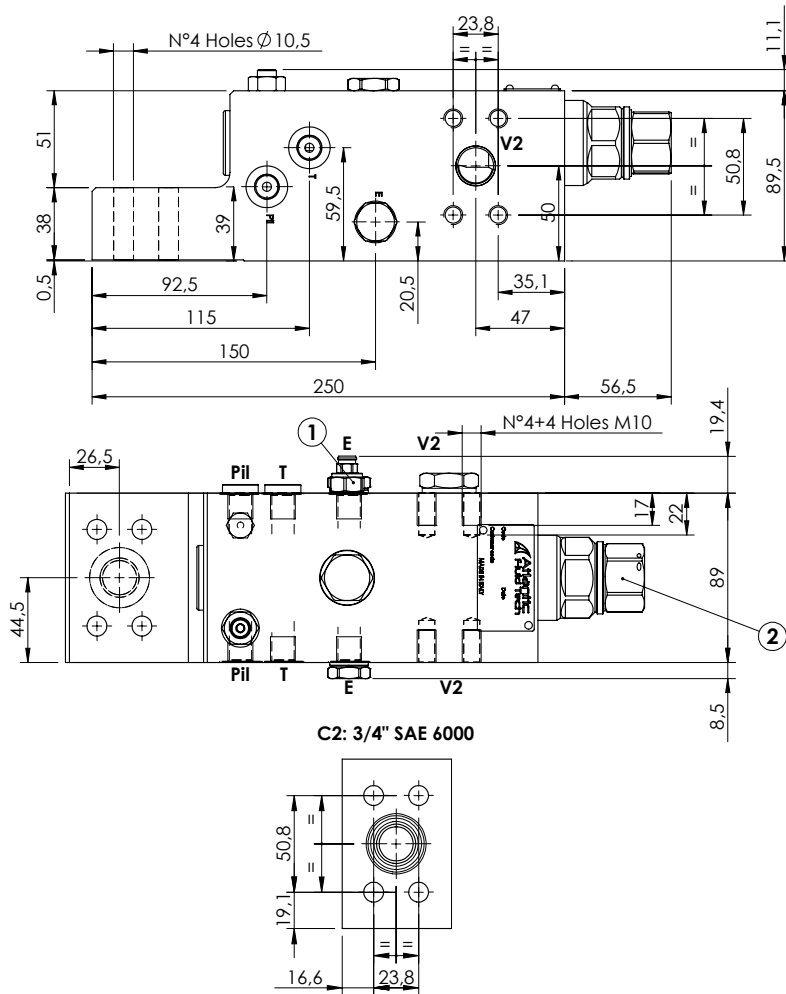


**CHECK AND METERING VALVE**

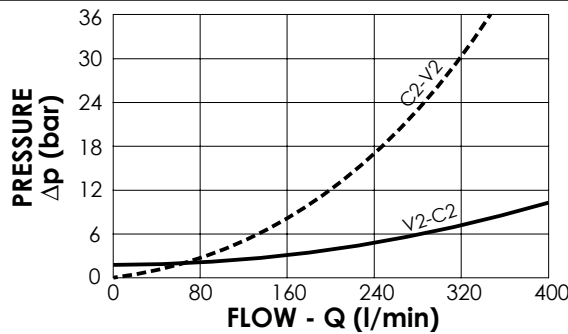
**MLST-300-AAGR**

**FLANGED TYPE  
3/4" SAE 6000**



**SPECIFICATIONS**

Max. operating pressure:	420 bar
Rated flow:	350 l/min
Manifold:	Steel
Weight:	12,27 kg



**NOTES**

When correctly adjusted for the specific excavator installation, these valves meet the requirement of ISO 8643

**ORDERING CODES**

Quick code	Description	Main ports size	Standard setting (bar)	Adjust. range (bar)	Pressure increase (bar/turn)
ML000106	MLST-300-AAGR-00-S34-N420	V2,C2: 3/4" SAE 6000 E,Pil,T: G 1/4"	① 350 Q=5 l/min ② 7.5 Crack. pr.	① 150-420 ② 3-15	① 236 ② 3.4
ML000115	MLST-300-AAJR-00-S34-N420	V2,C2: 3/4" SAE 6000 E,Pil,T: 1/4" JIS	① 350 Q=5 l/min ② 7.5 Crack. pr.	① 150-420 ② 3-15	① 236 ② 3.4