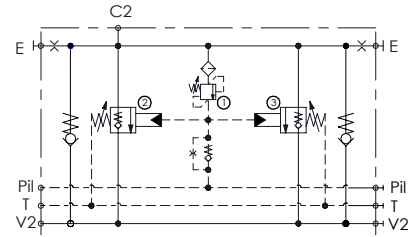
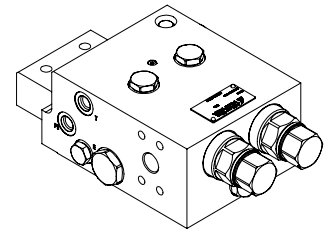
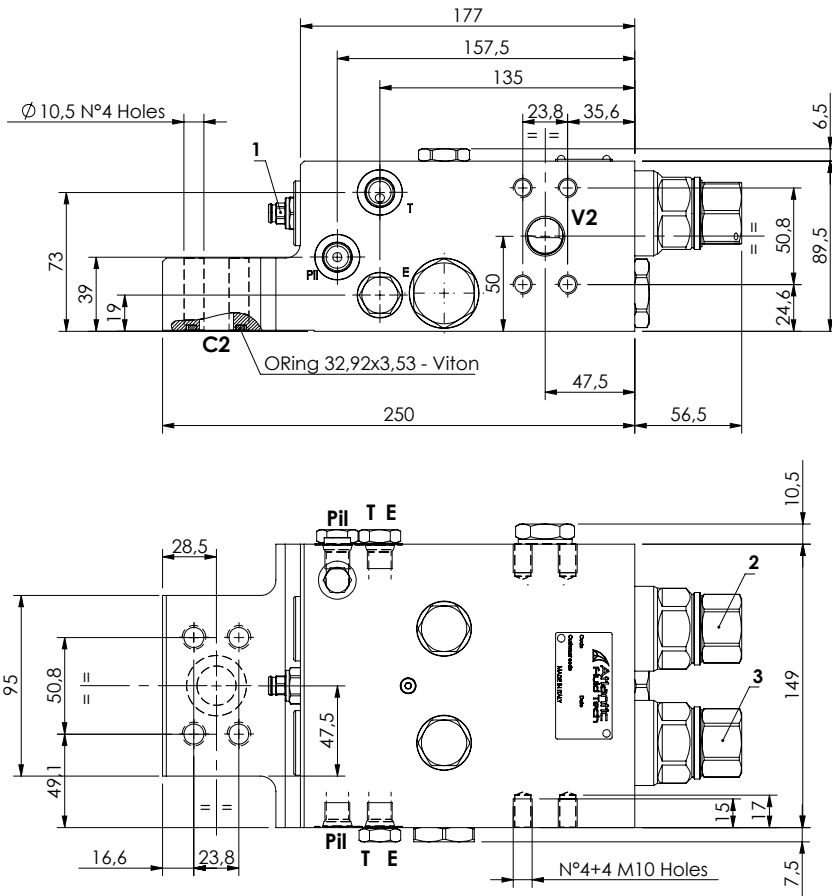


CHECK AND METERING VALVE

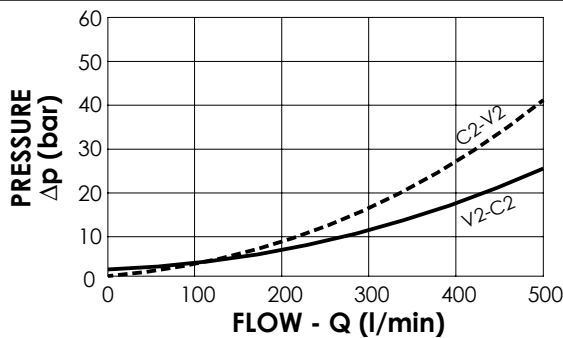
**MLST-500-AAJN**

**FLANGED TYPE  
3/4" SAE 6000**



**SPECIFICATIONS**

Max. operating pressure:	420 bar
Rated flow:	500 l/min
Manifold:	Steel
Weight:	19,51 kg



**NOTES**

When correctly adjusted for the special excavator installation, these valves meet the requirement of ISO 8643

**ORDERING CODES**

Quick code	Description	Main ports size	Standard setting (bar)	Adjust. range (bar)	Pressure increase (bar/turn)
ML000263	MLST-500-AAJN-00-S34-N420	V2,C2: 3/4" SAE 6000 E,Pil,T: JIS 1/4"	① 350 Q=5 l/min ②③7.5 Crack. pr.	① 150-420 ②③3-15	① 236 ②③3.4