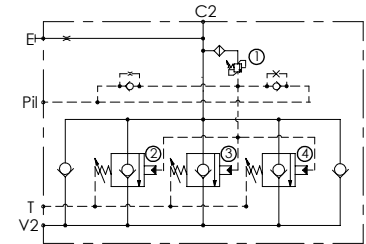
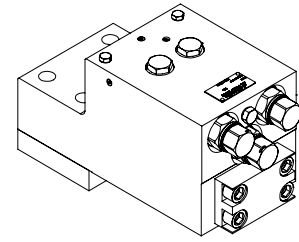
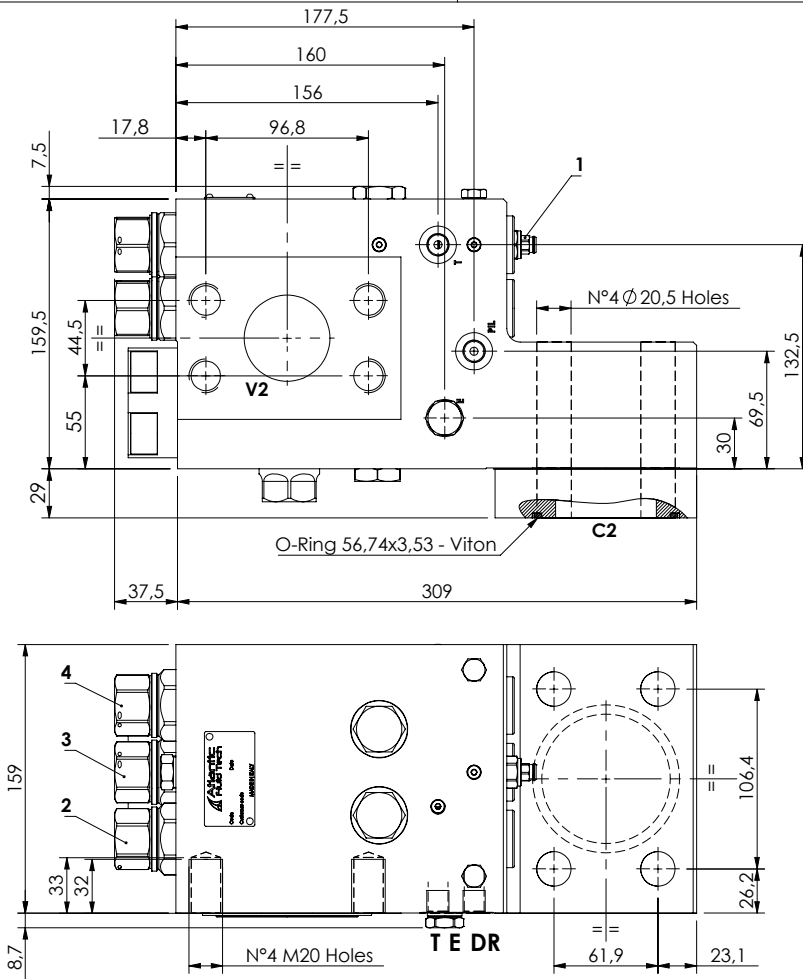


CHECK AND METERING VALVE

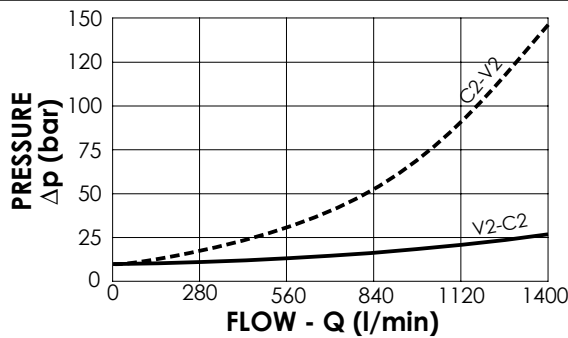
**MLST-1500-AAGL**

**FLANGED TYPE  
3" SAE 3000 / 2" SAE 6000  
LEFT VERSION**



**SPECIFICATIONS**

|                          |            |
|--------------------------|------------|
| Max. operating pressure: | 420 bar    |
| Rated flow:              | 1500 l/min |
| Manifold:                | Steel      |
| Weight:                  | 47,15 kg   |



**NOTES**

When correctly adjusted for the special excavator installation, these valves meet the requirement of ISO 8643

**ORDERING CODES**

| Quick code | Description                | Main ports size                                  | Standard setting (bar)              | Adjust. range (bar)  | Pressure increase (bar/turn) |
|------------|----------------------------|--|-------------------------------------|----------------------|------------------------------|
| ML000163   | MLST-1500-AAGL-00-S30-N420 | V2:2" SAE 6000<br>C2:3" SAE 3000 E,P,ii,T:G 1/4" | ① 400 Q=5 l/min<br>②③④7.5 Crack. pr | ① 200-420<br>②③④3-15 | ① 236<br>②③④3.4              |
|            |                            |  |                                     |                      |                              |
|            |                            |  |                                     |                      |                              |
|            |                            |  |                                     |                      |                              |
|            |                            |  |                                     |                      |                              |