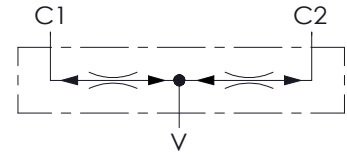
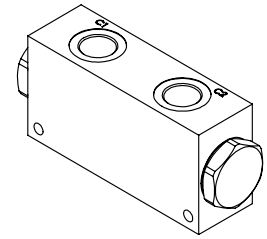
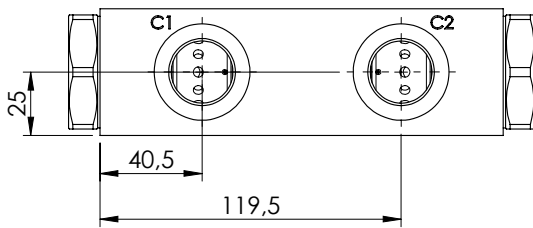
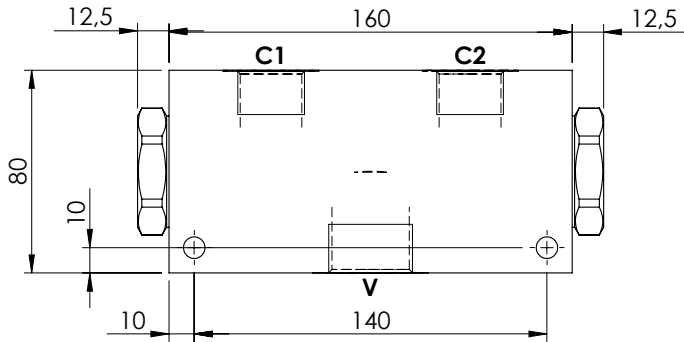
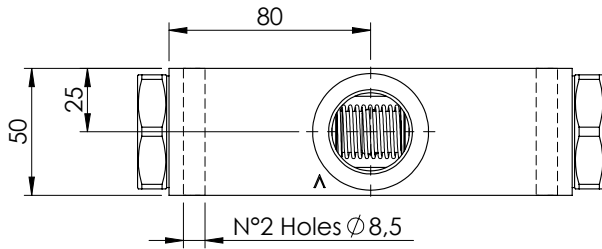


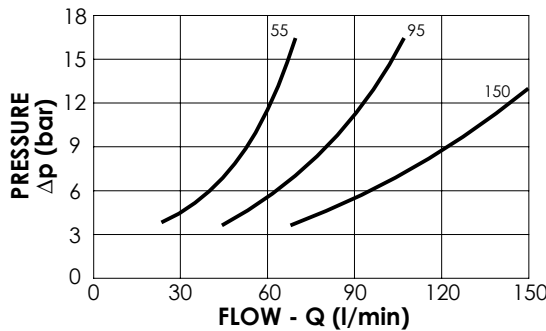
**FLOW DIVIDER AND COMBINER**

**MFDT-150-BFLR**



**SPECIFICATIONS**

Max. operating pressure:	210 bar
Division or combination:	50% - 50%
Manifold:	Aluminium
Weight:	2,1 kg



**NOTES**

Flow divider accuracy: ± 4-5% between 40-100% of max. input flow

**ORDERING CODES**

Quick code	Description	Main ports size	Inlet range Flow (l/min)	
MF000117	MFDT-150-BFLR-95-G10-N210	V: G 1" C1,C2: G 3/4"	56 - 95	
MF000118	MFDT-150-BFLR-15-G10-N210	V: G 1" C1,C2: G 3/4"	90 - 150	
MF000122	MFDT-150-BFLR-55-G34-N210	V: G 3/4" C1,C2: G 1/2"	28 - 55	
MF000123	MFDT-150-BFLR-95-G34-N210	V: G 3/4" C1,C2: G 1/2"	56 - 95	