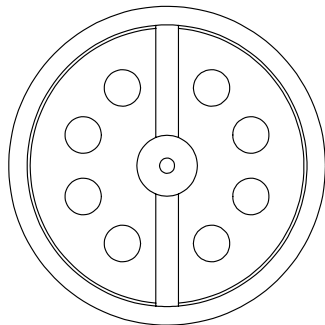
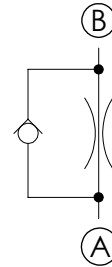
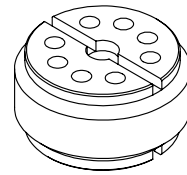
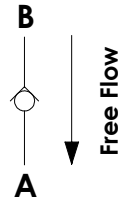
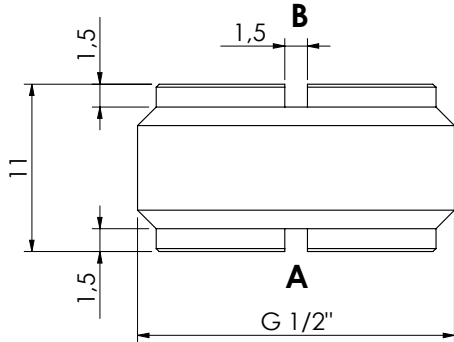


FLOW CONTROL VALVES

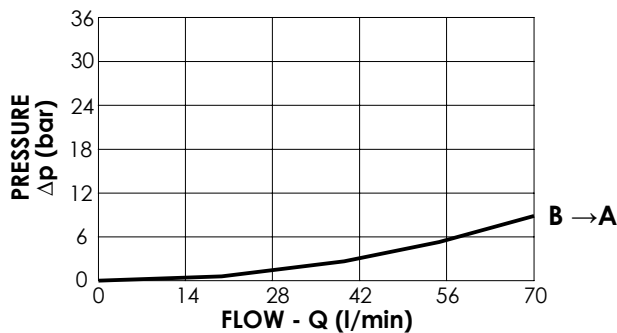
**CFFN-070-MFSR**

INSERT TYPE  
DOUBLE MOUNTING



**SPECIFICATIONS**

Max. operating pressure:	350bar
Rated flow:	70 l/min
Cavity:	G 1/2
Weight:	0,02 kg
Installation torque:	10 Nm



**ORDERING CODES**

Quick code	Description	Ø Orifice	Quick code	Description	Ø Orifice
CF000127	CFFN-070-MFSR-10-G12-N350	1,0	CF000080	CFFN-070-MFSR-33-G12-N350	3,3
CF000128	CFFN-070-MFSR-15-G12-N350	1,5			
CF000352	CFFN-070-MFSR-18-G12-N350	1,8			
CF000117	CFFN-070-MFSR-20-G12-N350	2,0			
CF000129	CFFN-070-MFSR-25-G12-N350	2,5			
CF000130	CFFN-070-MFSR-30-G12-N350	3,0			