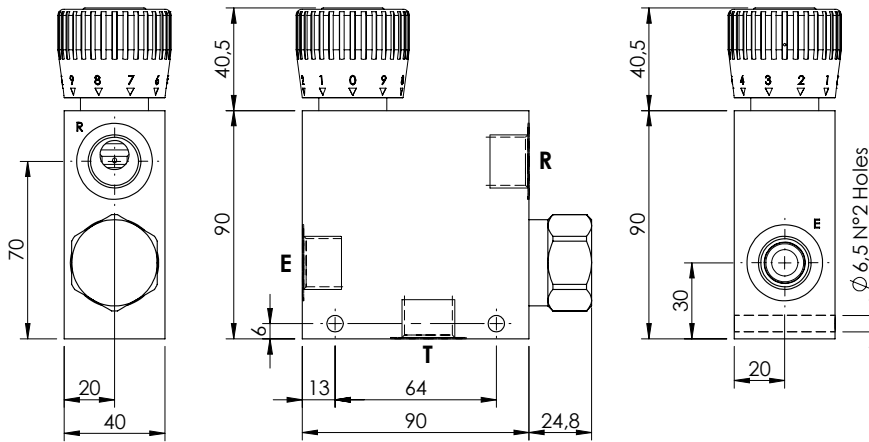
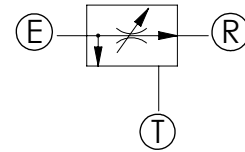
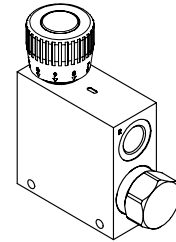
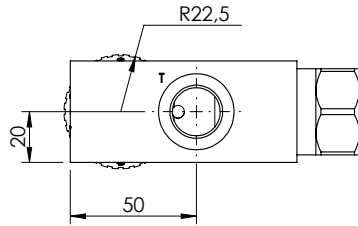


**FLOW REGULATOR**

**MFCT-090-RPZR**

**3 WAYS COMPENSATED**

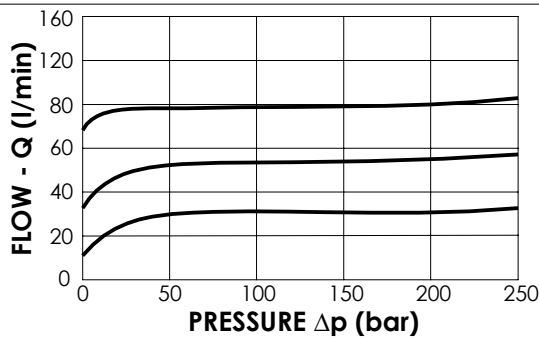
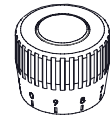


**SPECIFICATIONS**

Max. operating pressure:	210 bar
Rated flow:	90 l/min
Manifold:	Aluminium
Weight:	0,93 kg

**ADJUSTMENT TYPE**

Graduated handknob for flow regulation under pressure



**ORDERING CODES**

Quick code	Description	Main ports size	Regulated flow range (l/min)	Adjustment type
MF000194	MFCT-090-RPZR-06-G12-N210	G 1/2"	0 - 6	Graduated handknob
MF000195	MFCT-090-RPZR-12-G12-N210	G 1/2"	0 - 12	Graduated handknob
MF000196	MFCT-090-RPZR-25-G12-N210	G 1/2"	0 - 25	Graduated handknob
MF000197	MFCT-090-RPZR-32-G12-N210	G 1/2"	0 - 32	Graduated handknob
MF000198	MFCT-090-RPZR-50-G12-N210	G 1/2"	0 - 50	Graduated handknob
MF000199	MFCT-090-RPZR-63-G12-N210	G 1/2"	0 - 63	Graduated handknob
MF000200	MFCT-090-RPZR-70-G12-N210	G 1/2"	0 - 70	Graduated handknob
MF000201	MFCT-090-RPZR-80-G12-N210	G 1/2"	0 - 80	Graduated handknob