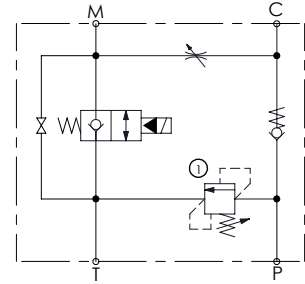
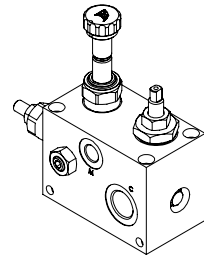
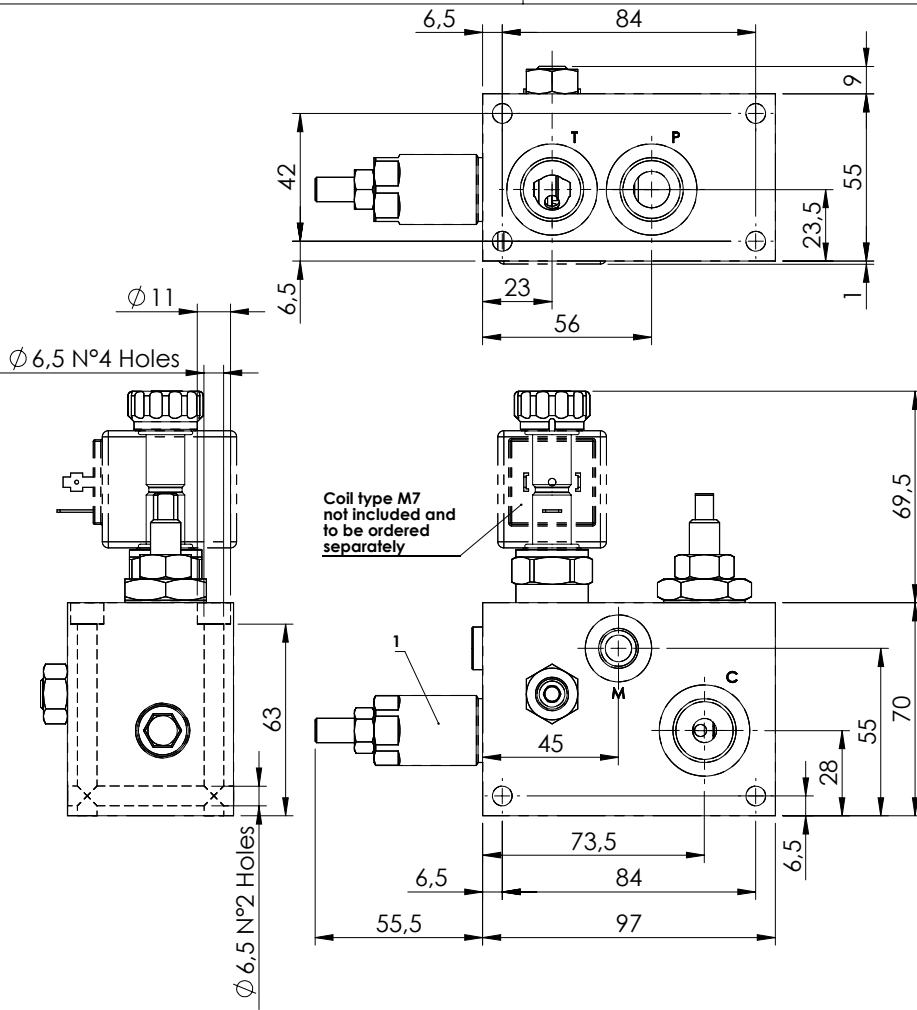


**FLOW REGULATOR**

**BPNN-025-LLEU**

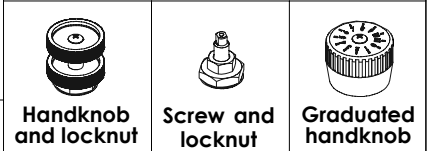
SOLENOID OPERATED VALVES  
STANDARD INTEGRATED CIRCUITS



**SPECIFICATIONS**

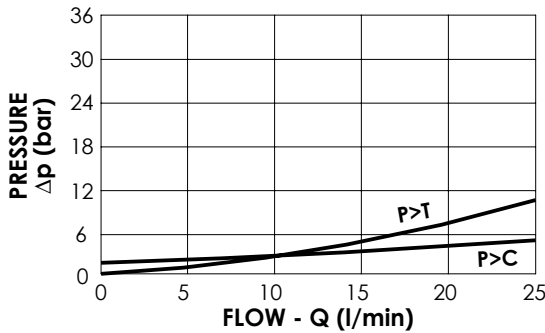
Max. operating pressure:	350 bar
Rated flow:	25 l/min
Manifold:	Aluminium
Weight:	1,3 kg
Coil:	M7

**ADJUSTMENT OPTIONS**



**NOTES**

-For options see pag. 22.00.000.



**ORDERING CODES**

Quick code	Description	Main ports size	Standard setting (bar, Q=5 l/min)	Adjust. range (bar)	Pressure increase (bar)	Adjust. options
BP000081	BPNN-025-LLEU-G12-N200	P,T,C:G1/2" M:G1/4"	200	50-210	42	Screw and locknut