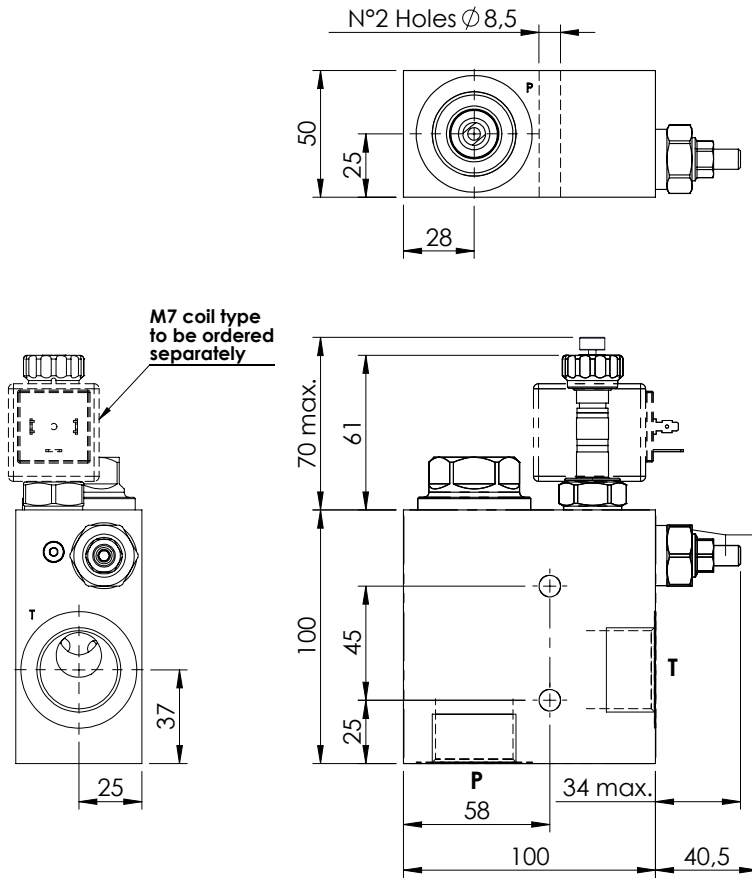
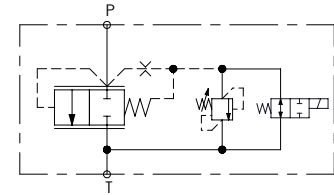
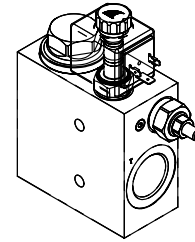


UNLOADING VALVE

**MFTS-200-DHAN**

**SOLENOID OPERATED  
UNLOADING VALVE  
WITH RELIEF**

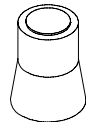


**SPECIFICATIONS**

Max. operating pressure:	350 bar
Rated flow:	200 l/min
Manifold:	Steel
Weight:	3,55 kg

**SEALING CAP**

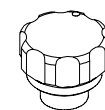
Ordering code:  
**AT000020**



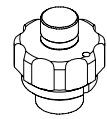
**NOTES**

See chapter 18.00.000 for coil.

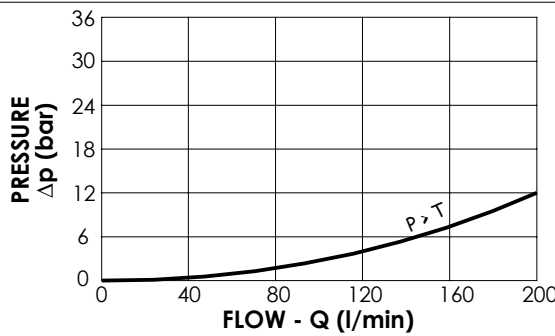
**OPTIONS**



Standard



Push style  
override



**ORDERING CODES**

Quick code	Description	Main ports size	Standard setting (bar, Q=5 l/min)	Adjust. range (bar)	Pressure increase (bar/turn)	Options
MF000083	MFTS-200-DHAN-NP-G10-N350	G 1"	350	140-350	142	Standard
MF000103	MFTS-200-DHAE-NP-G10-N350	G 1"	350	140-350	142	Push style override