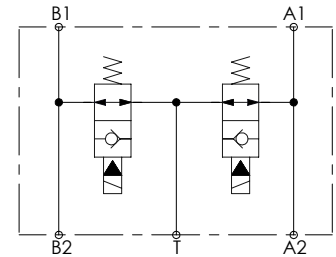
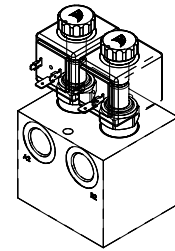
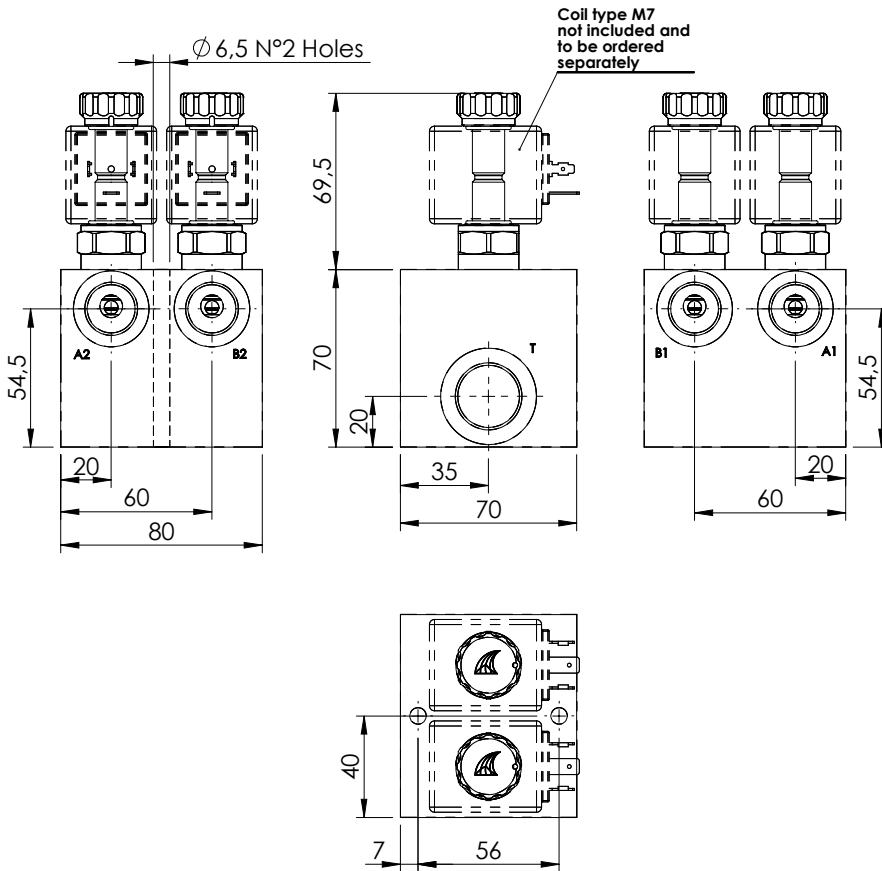


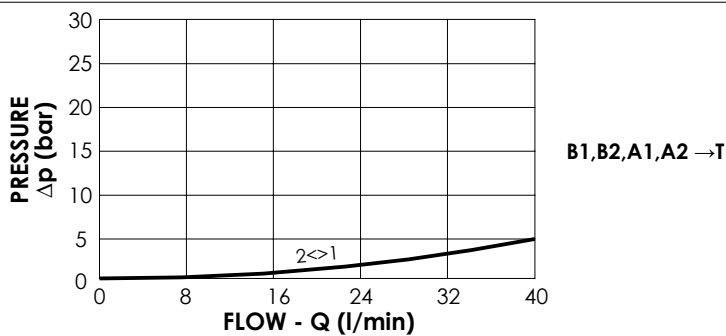
UNLOADING VALVE

BNND-040-LE



SPECIFICATIONS

Max. operating pressure:	210 bar
Rated flow:	40 l/min
Manifold:	Aluminium
Weight:	1,1 kg
Coil:	M7



NOTES

See chapter 18.00.000 for coil.

ORDERING CODES

Quick code	Description	Main ports size
BD000200	BNND-040-LE-NP-G12-N210	A1,A2,B1,B2: G1/2" T: G3/4"