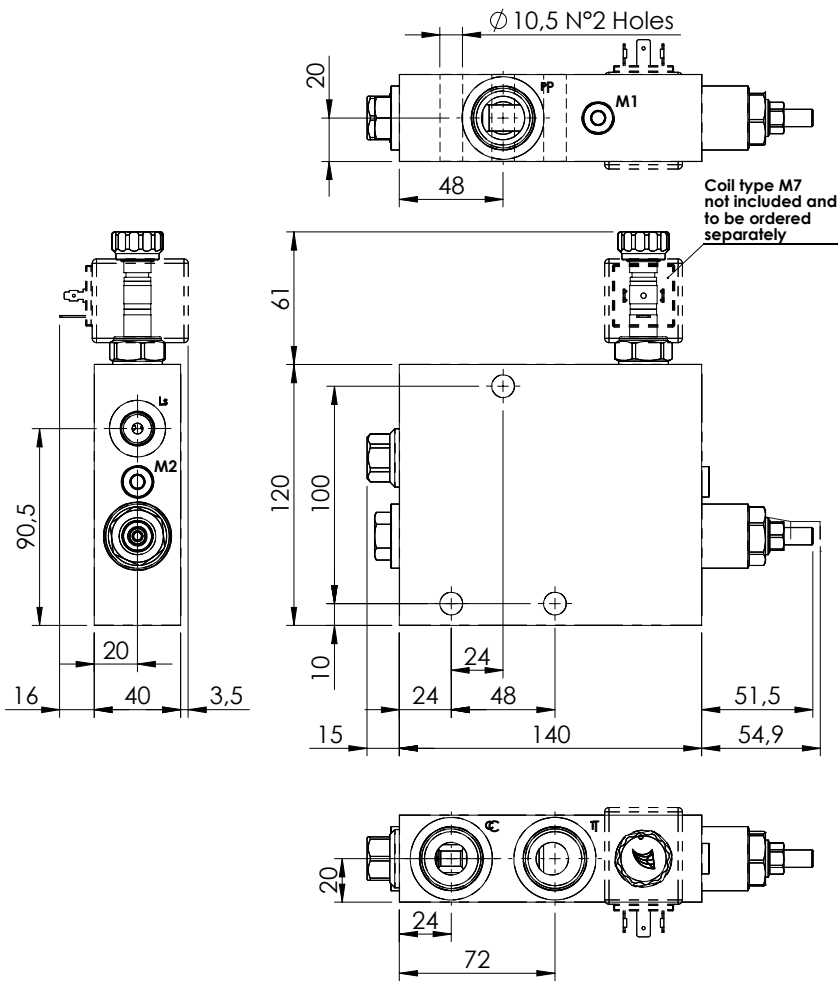
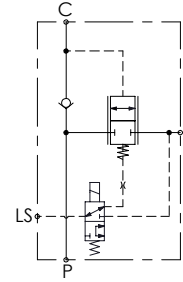
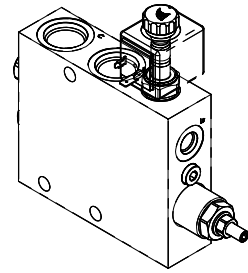


UNLOADING VALVE

MTTE-150-SLSN

**PUMP UNLOADING
PILOTED**

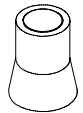


SPECIFICATIONS

Max. operating pressure:	350 bar
Rated flow:	150 l/min
Manifold:	Steel
Weight:	4,69 Kg
Coil:	M7

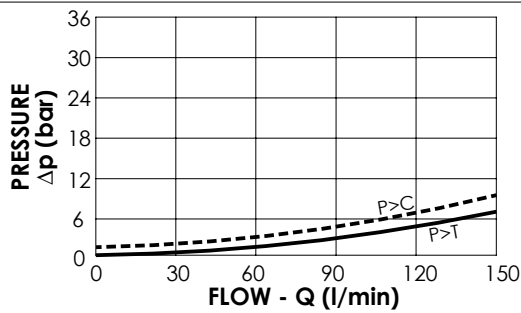
SEALING CAP

Ordering code:
AT000020



NOTES

See chapter 18.00.000 for coil.



ORDERING CODES

Quick code	Description	Main ports size
MT000028	MTTE-150-SLSN-NP-U11-N350	P,C,T: 1 1/16" UNF-2B LS: 9/16" UNF-2B