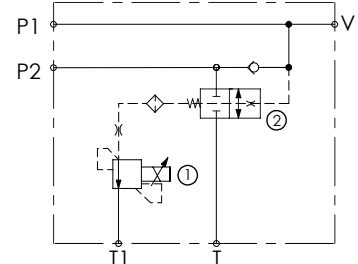
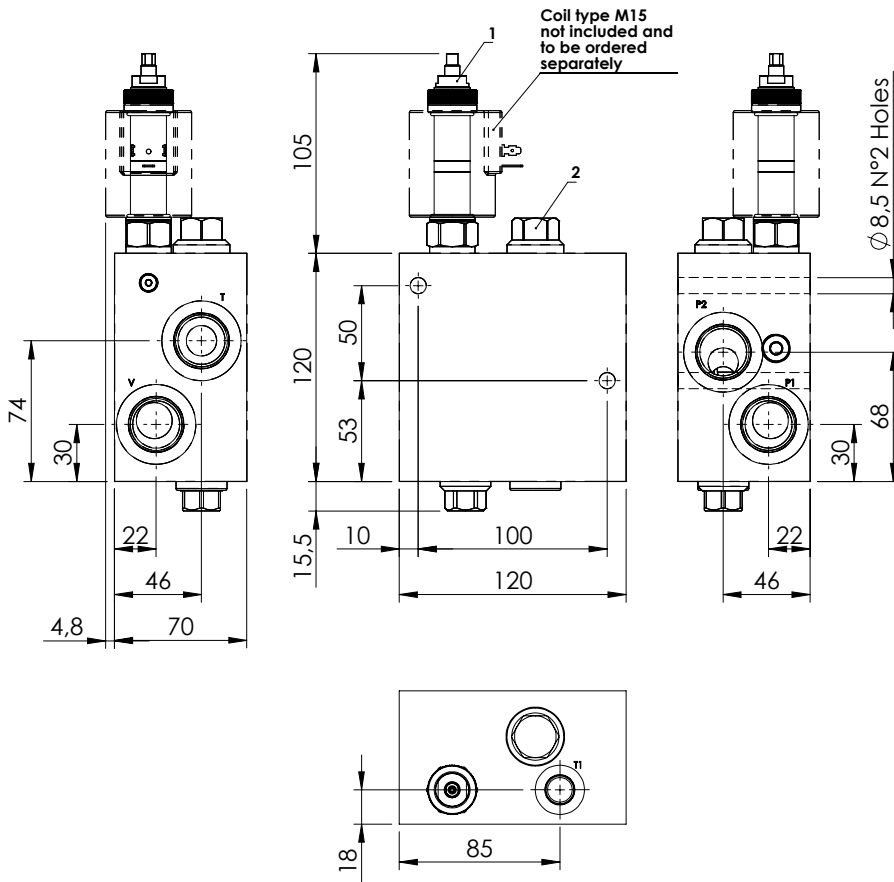
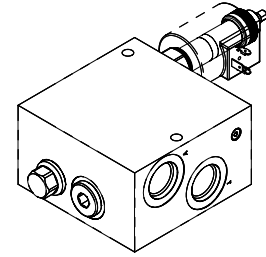


**UNLOADING VALVE**

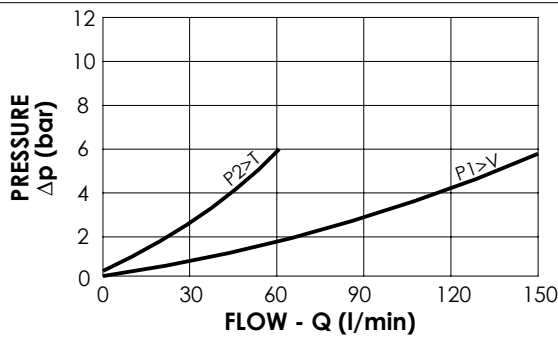
**MFTS-150-EFCE**

**SOLENOID OPERATED**



**SPECIFICATIONS**

Max. operating pressure:	350 bar
Rated flow:	150 l/min
Manifold:	Steel
Weight:	7,1 kg
Coil type:	M5



**NOTES**

-See chapter 18.00.000 for coil.

**ORDERING CODES**

Quick code	Description	Main Ports Size	Standard setting (bar)	Setting range (bar)
MF000345	MFTS-150-EFCE-NP-U11-N350	V,P1,P2,T:1" 1/16-12 UNF T1:9/16-18 UNF	30	30-350