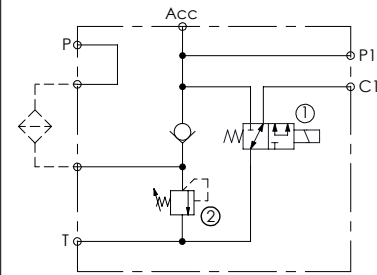
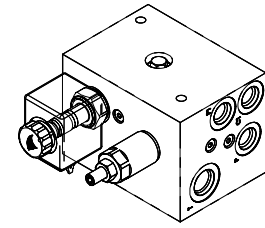
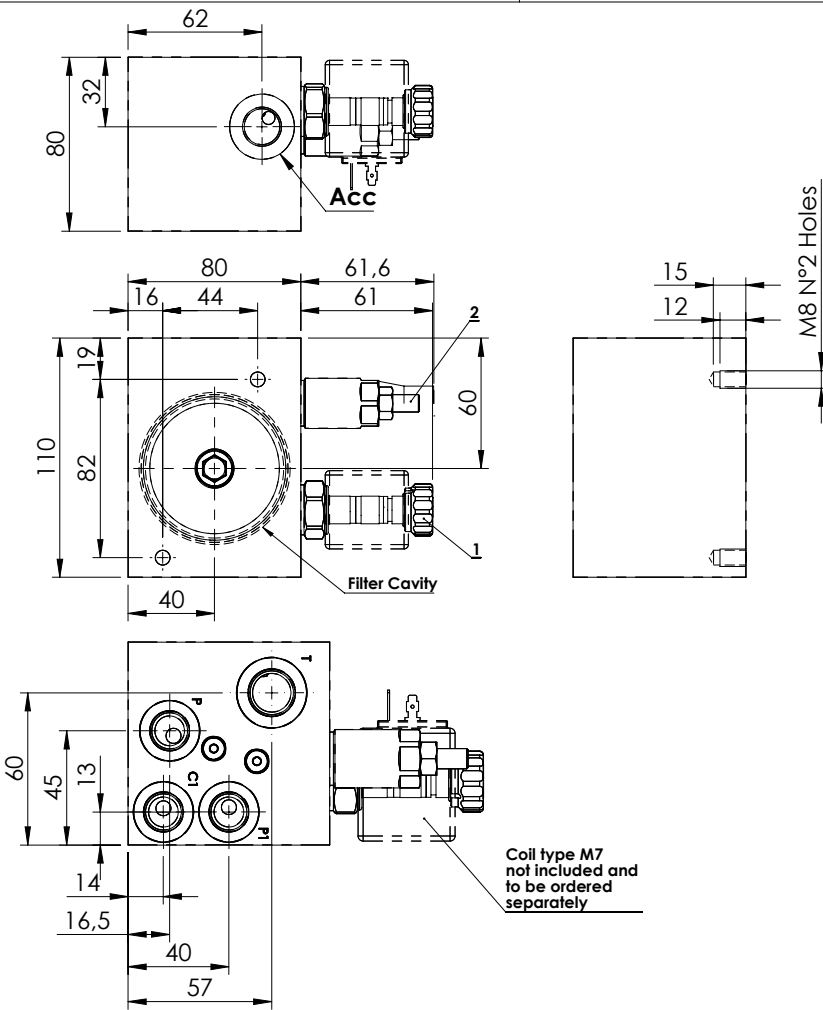


**FILTER VALVES**

**BPNN-025-LLEU**

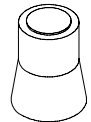


**SPECIFICATIONS**

Max. operating pressure:	100 bar
Rated flow:	25 l/min
Manifold:	Aluminium
Weight:	1,1 kg

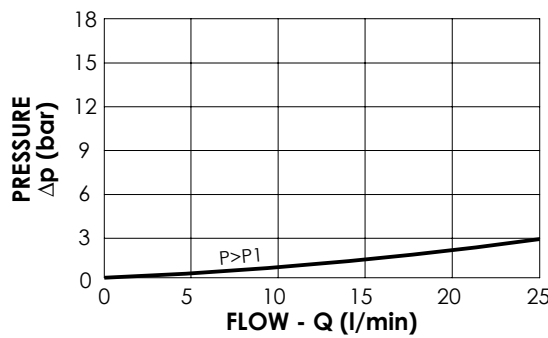
**SEALING CAP**

Ordering code:  
AT000020



**NOTES**

- For filter cavity information or special version ask AFT sales network.
- See chapter 18.00.000 for coil.



**ORDERING CODES**

Quick code	Description	Main ports size	Standard setting (bar, Q=5 l/min)	Adjust. range (bar)	Pressure increase (bar/turn)
BP000108	BPNN-025-LLEU-NP-J38-N100	C1,P1,P:1/4" JIS T:3/8" JIS	25	10-50	10