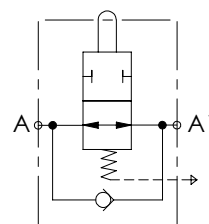
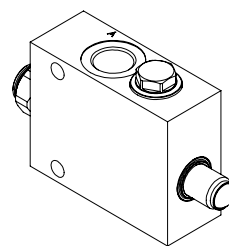
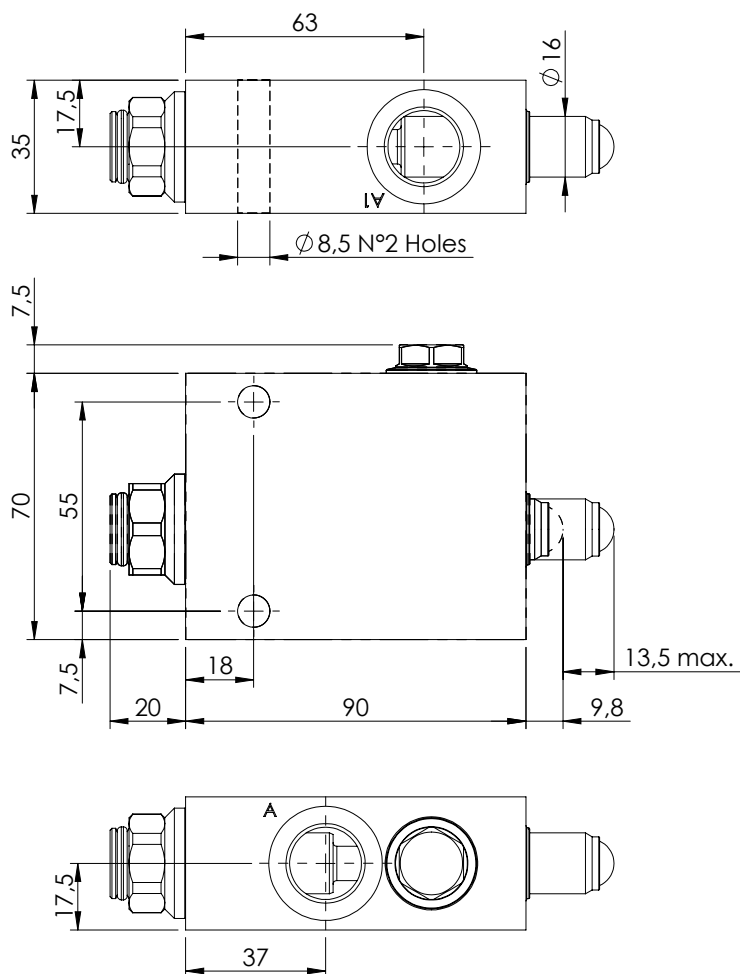


# END OF STROKE VALVE

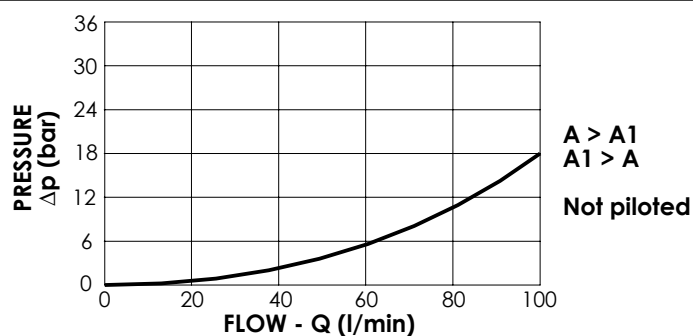
## MDTA-100-AVNR

### NORMALLY OPEN AIR VENTED



## SPECIFICATIONS

Max. operating pressure:	350 bar
Rated flow:	100 l/min
Manifold:	Steel
Weight:	1,54 kg
Maximum stroke:	13,5 mm



## ORDERING CODES

Quick code	Description	Main ports size	Cracking pressure (Kg)	Fully closed (Kg)
MD000032	MDTA-100-AVNR-NP-G12-N350	G 1/2"	5,3	14