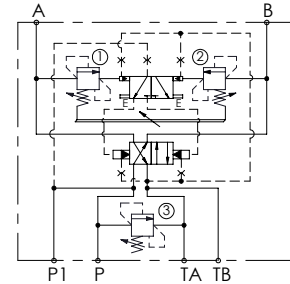
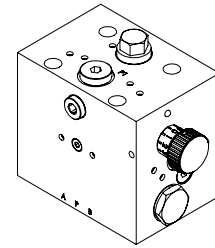
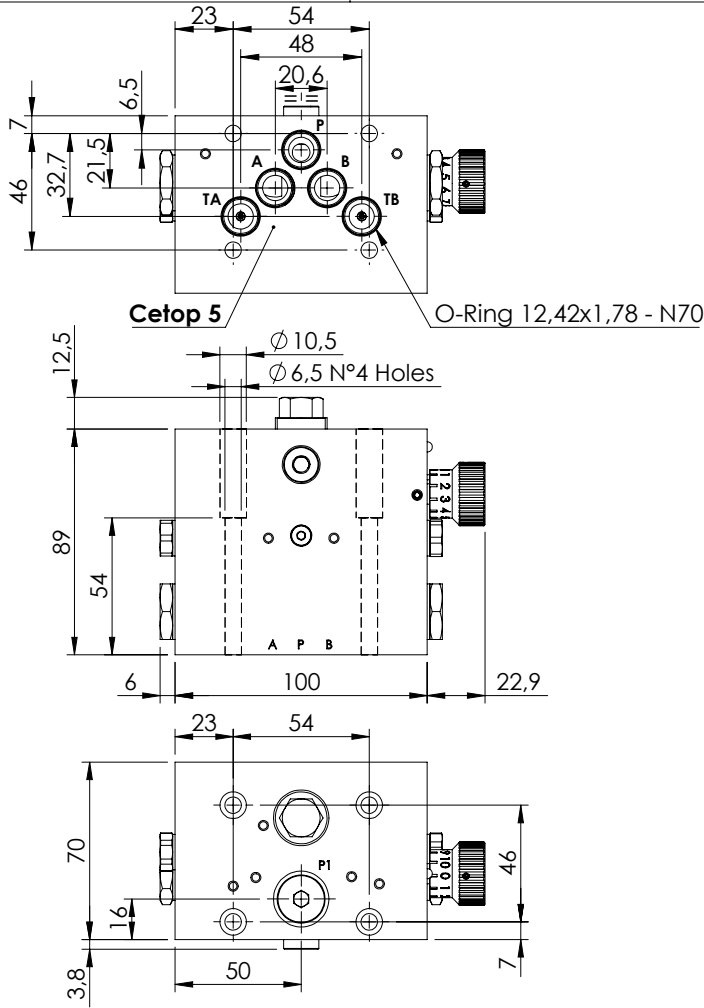


**AUTOMATIC DIRECTIONAL VALVE**

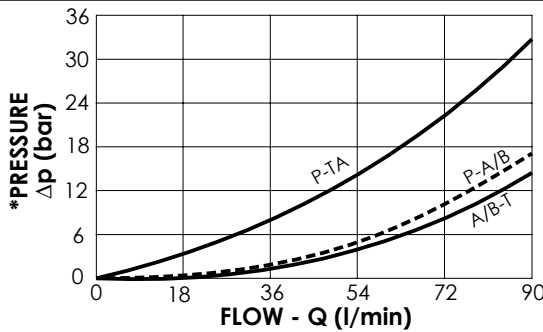
**MDAP-090-NNNR**

**PRESSURE SWITCHING**



**SPECIFICATIONS**

Max. operating pressure:	350 bar
Rated flow:	90 l/min
Manifold:	Cast Iron
Weight:	4,44 kg



**NOTES**

Minimum required flow: 3 l/min

**ORDERING CODES**

Quick code	Description	Main ports size	Standard setting (bar, Q=5 l/min)	Adjust. range (bar)	Pressure increase (bar/turn)
MD000119	MDAP-090-NNNR-NP-N10-N350	A,B,P,TA,TB: CETOP 5 P1: G 1/4"	① ② 180 ③ 200	① ② 140-350	① ② 146
				<b>Fix setting</b>	