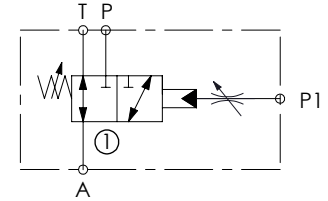
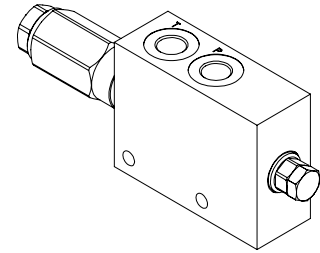
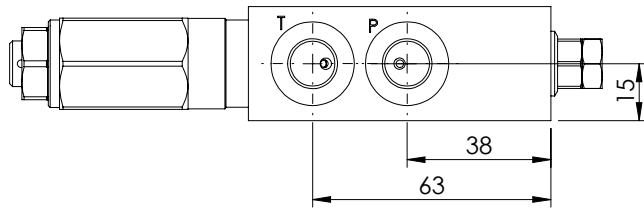
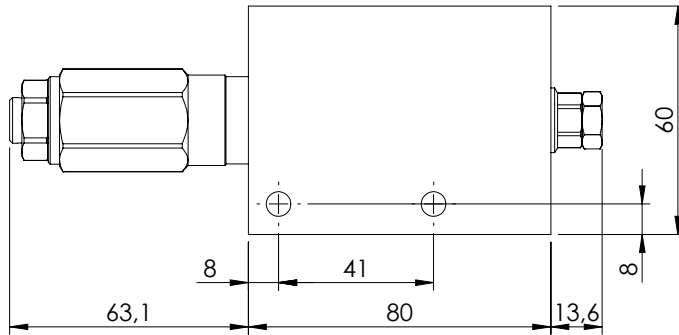
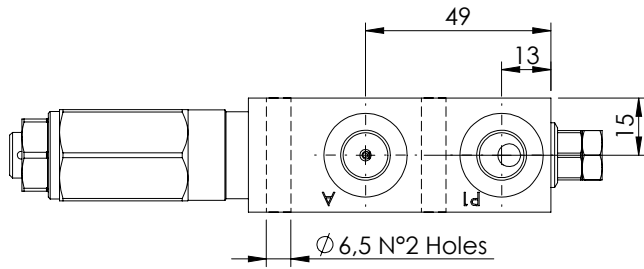


LOAD LIMITING DEVICE

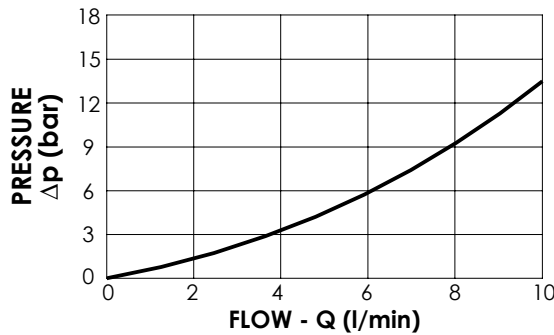
**MTP-010-TLSN**

HYDRAULIC PRESSURE  
UNLOADING  
3 WAYS



**SPECIFICATIONS**

Max. operating pressure:	210 bar
Rated flow:	10 l/min
Manifold:	Aluminium
Weight:	0,6 kg



**NOTES**

**ORDERING CODES**

Quick code	Description	Main ports size	Standard setting (bar, Q=5 l/min)	Adjust. range (bar)	Pressure increase (bar/turn)
MT000032	MTP-010-TLSN-NP-G14-N210	T,P,P1,A:G 1/4"	25	3-50	3