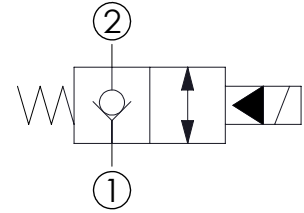
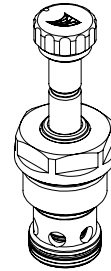
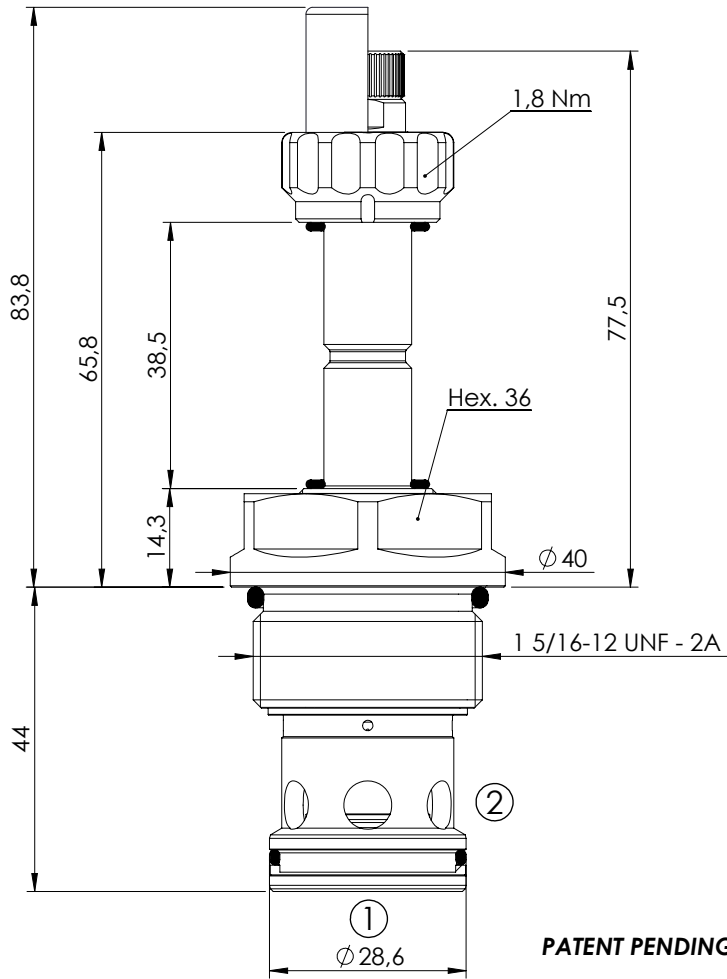


SOLENOID OPERATED CARTRIDGE

CEBN-300-NCFN

**PILOT OPERATED
POPPET TYPE**

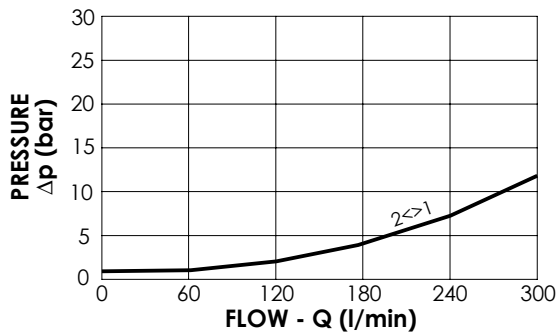


SPECIFICATIONS

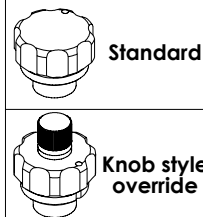
Max. operating pressure:	350/500 bar
Rated flow:	300 l/min
Cavity:	SAE-16-2N
Weight:	0,36 kg
Min. voltage required:	90% of nominal
Coil type:	M7 type
Seal kit:	RA900084

NOTES

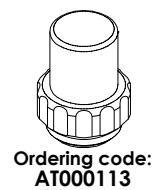
Installation torque: 118 - 132 Nm



OPTIONS



SEALING CAP



ORDERING CODES

Quick code	Description	Options	Max operating pressure (bar)
CE000393	CEBN-300-NCFN-05-S16-N350	Standard	350
CE000395	CEBN-300-NCFK-05-S16-N350	Knob style override	350
CE000693	CEBN-300-NCFN-05-S16-N500	Standard	500
CE000695	CEBN-300-NCFK-05-S16-N500	Knob style override	500