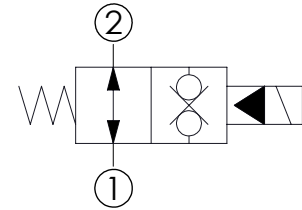
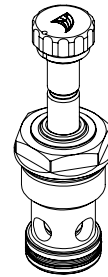
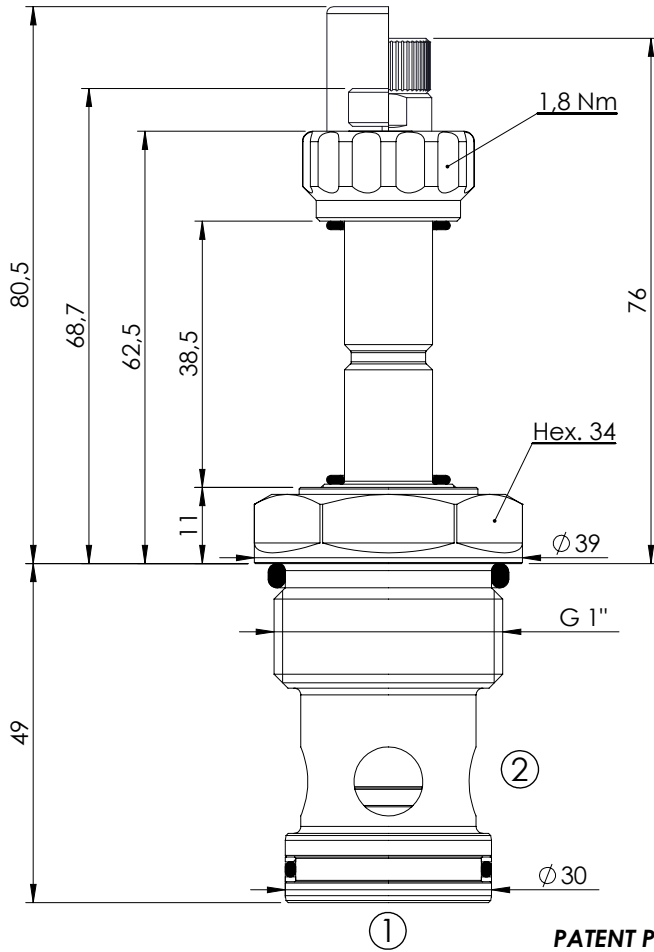


**SOLENOID OPERATED CARTRIDGE**

**CEBN-200-NAFN**

**PILOT OPERATED  
POPPET TYPE**

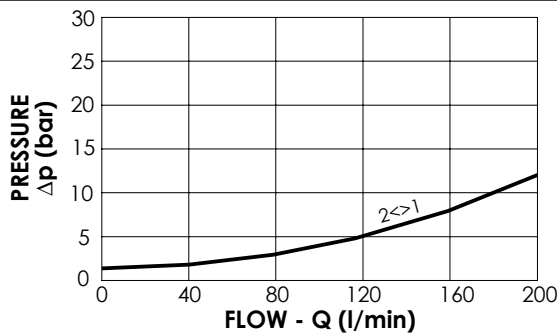


**SPECIFICATIONS**


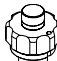
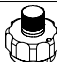
|                          |                |
|--------------------------|----------------|
| Max. operating pressure: | 350/500 bar    |
| Rated flow:              | 200 l/min      |
| Cavity:                  | VP000013       |
| Weight:                  | 0,35 kg        |
| Min. voltage required:   | 90% of nominal |
| Coil type:               | M7 type        |
| Seal kit:                | RD900013       |

**NOTES**

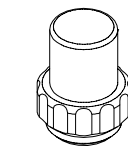
Installation torque: 135 - 150 Nm



**OPTIONS**

-  Standard
-  Push style override
-  Knob style override

**SEALING CAP**



Ordering code:  
AT000113

**ORDERING CODES**

| Quick code | Description               | Options             | Max operating pressure (bar) |
|------------|---------------------------|---------------------|------------------------------|
| CE000382   | CEBN-200-NAFN-32-013-N350 | Standard            | 350                          |
| CE000383   | CEBN-200-NAFP-32-013-N350 | Push style override | 350                          |
| CE000384   | CEBN-200-NAFK-32-013-N350 | Knob style override | 350                          |
| CE000682   | CEBN-200-NAFN-32-013-N500 | Standard            | 500                          |
| CE000683   | CEBN-200-NAFP-32-013-N500 | Push style override | 500                          |
| CE000684   | CEBN-200-NAFK-32-013-N500 | Knob style override | 500                          |