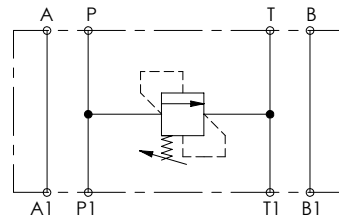
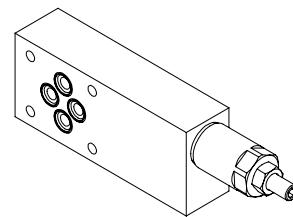
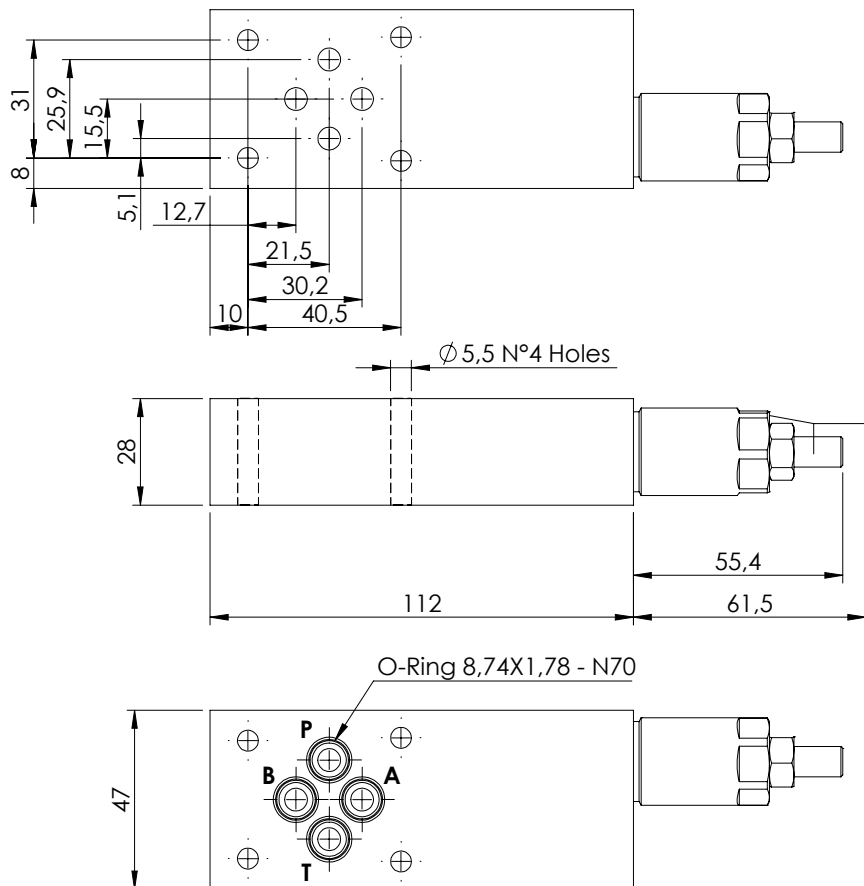


MODULAR VALVE FOR CETOP

KPLN-030-DPNA

CETOP 3

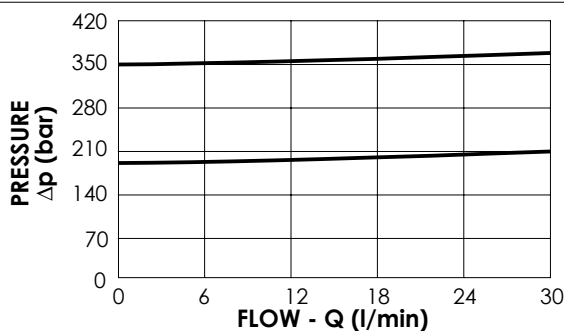
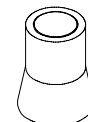


SPECIFICATIONS

Max. operating pressure:	210 bar
Rated flow:	30 l/min
Manifold:	Aluminium
Weight:	0,52 kg

SEALING CAP

Ordering code:
AT000020



NOTES

ORDERING CODES

Quick code	Description	Main ports size	Standard setting (bar, Q=5 l/min)	Adjustm. range (bar)	Pressure increase (bar/turn)
KP000170	KPLN-030-DPNA-HN-N06-N350	A,B,P,T: CETOP 3	350	100-350	91
KP000112	KPLN-030-DPNA-HN-N06-N200	A,B,P,T: CETOP 3	200	50-210	42