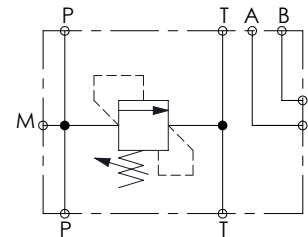
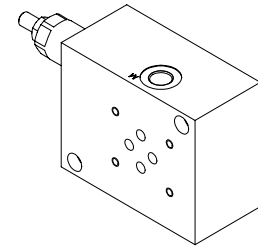
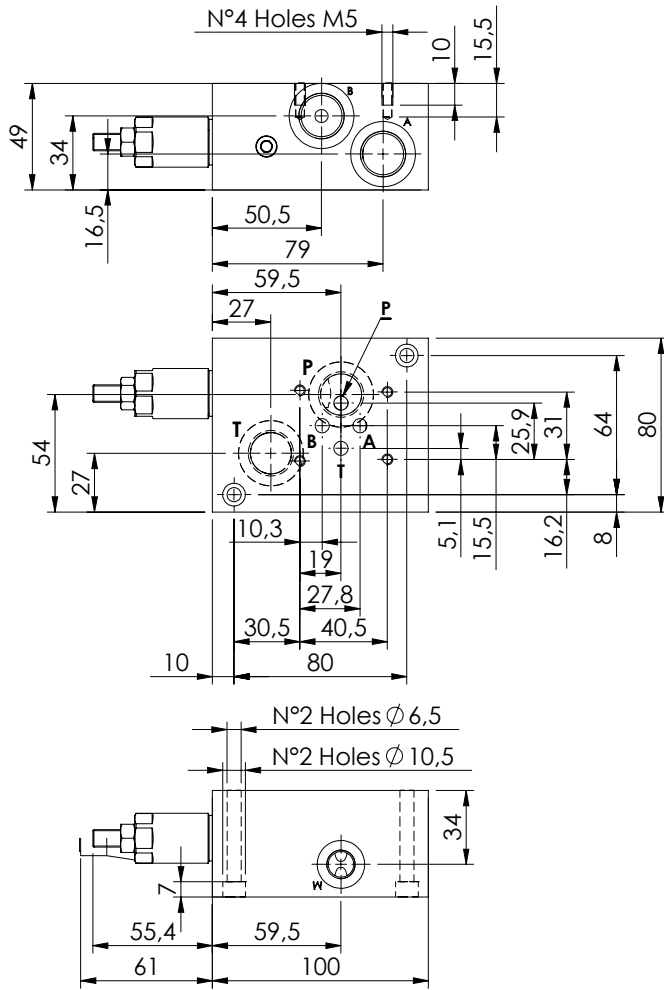


MODULAR VALVE FOR CETOP

**KPLN-030-DPNA**

**CETOP 3  
SUBPLATE**

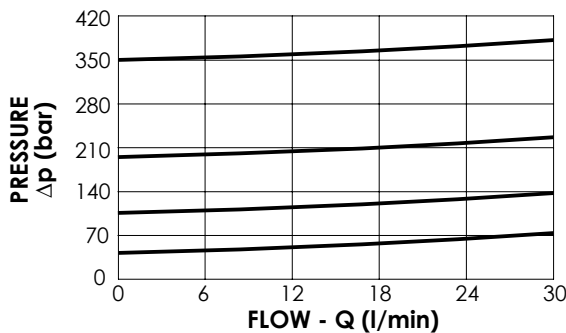
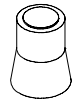


**SPECIFICATIONS**

Max. operating pressure:	350 bar
Rated flow:	30 l/min
Manifold:	Aluminium
Weight:	1,04 kg

**SEALING CAP**

Ordering code:  
**AT000020**



**NOTES**

**ORDERING CODES**

Quick code	Description	Main ports size	Standard setting (bar, Q=5 l/min)	Adjustm. range (bar)	Pressure increase (bar/turn)
KP000071	KPLN-030-DPNA-HN-N06-N350	A,B,P,T : CETOP 3 A,B,P,T : G 1/2" ; M: G1/4"	350	100-350	91
KP000072	KPLN-030-DPNA-HN-N06-N200	A,B,P,T : CETOP 3 A,B,P,T : G 1/2" ; M: G1/4"	200	50-210	42
KP000073	KPLN-030-DPNA-HN-N06-N100	A,B,P,T : CETOP 3 A,B,P,T : G 1/2" ; M: G1/4"	100	30-100	20
KP000074	KPLN-030-DPNA-HN-N06-N050	A,B,P,T : CETOP 3 A,B,P,T : G 1/2" ; M: G1/4"	50	5-50	10