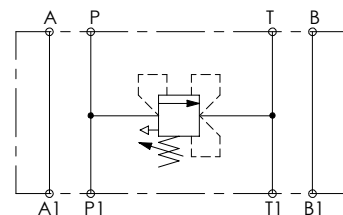
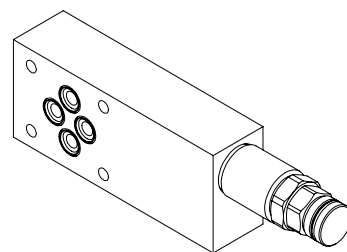
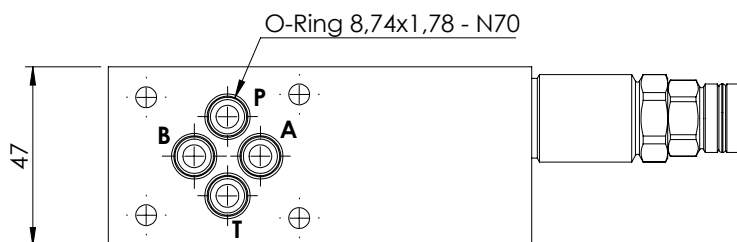
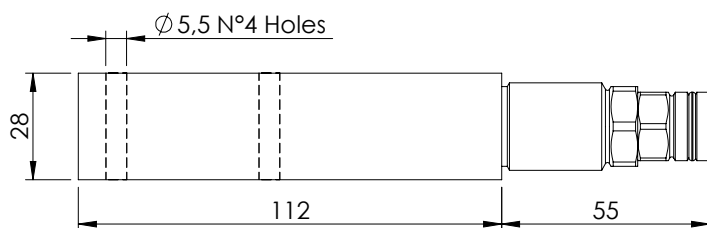
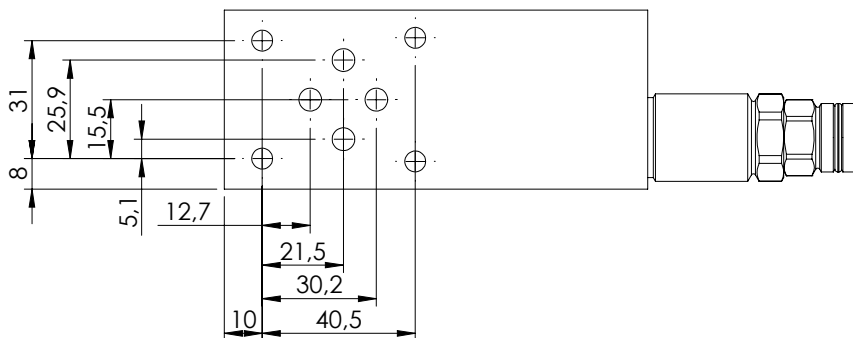


MODULAR VALVE FOR CETOP

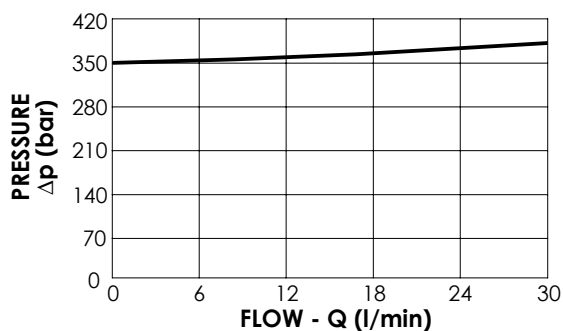
KPLT-030-DPNA

CETOP 3



SPECIFICATIONS

Max. operating pressure:	210 bar
Rated flow:	30 l/min
Manifold:	Aluminium
Weight:	0,54 kg



NOTES

ORDERING CODES

Quick code	Description	Main ports size	Standard setting (bar, Q=5 l/min)	Adjustm. range (bar)	Pressure increase (bar/turn)
KP000171	KPLT-030-DPNA-HN-N06-N350	A,B,P,T: CETOP 3	350	100-350	91