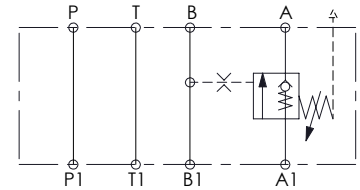
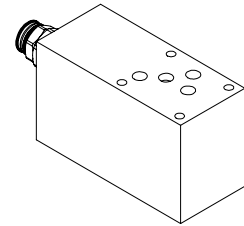
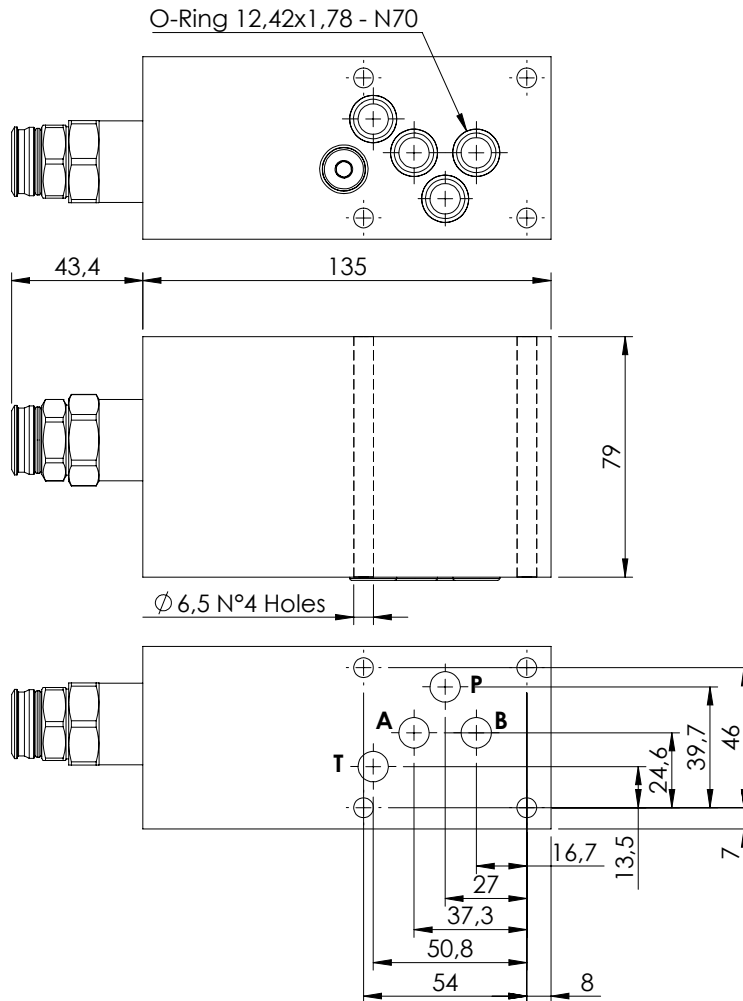


MODULAR VALVE FOR CETOP

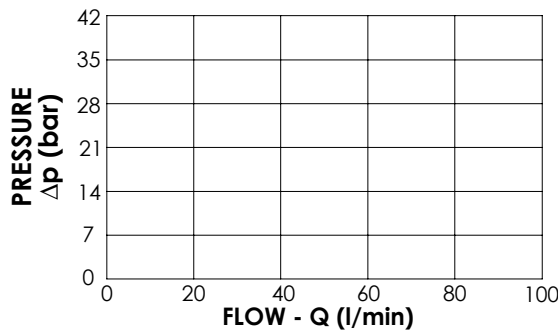
MBST-100-ZTNP

SINGLE ACTING
CETOP 5



SPECIFICATIONS

Max. operating pressure:	250 bar
Rated flow:	100 l/min
Manifold:	Aluminium
Weight:	1751,3 g



NOTES

Setting: at least 1.3 times the load induced pressure

ORDERING CODES

Quick code	Description	Pilot ratio	Main ports size	Standard setting (bar, Q=5 l/min)	Adjust. range (bar)	Pressure increase (bar/turn)
MB000924	MBST-100-ZTNP-01-T10-N250	1:0	A,B,P,T: CETOP 5	10	3-25	8