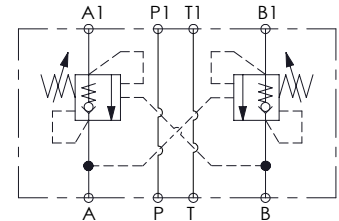
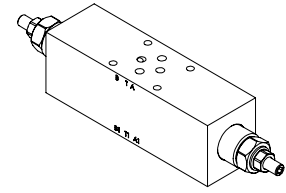
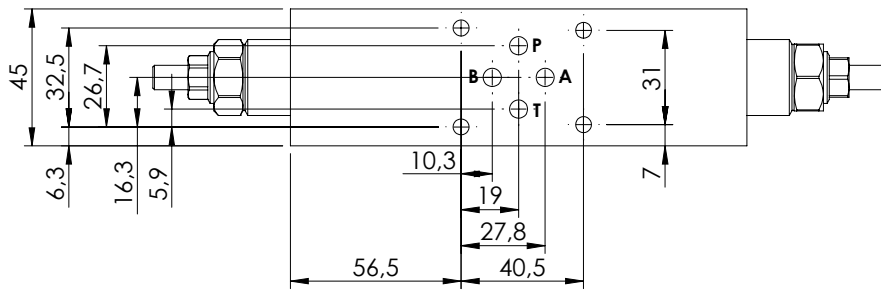
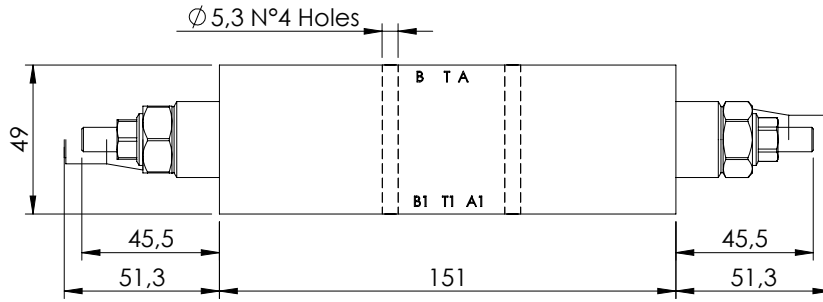
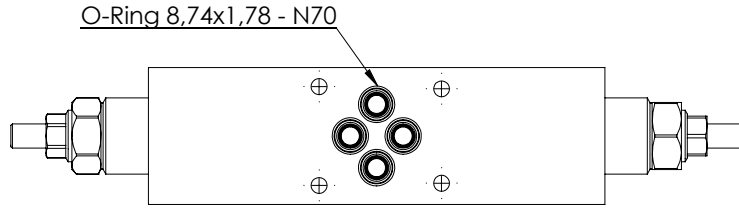


**MODULAR VALVE FOR CETOP**

**MBDN-060-ATNR**

**DOUBLE ACTING  
CETOP 3**

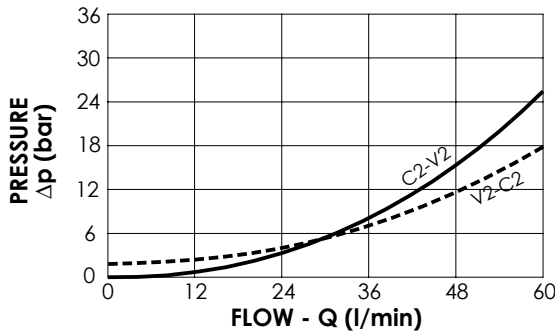
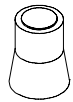


**SPECIFICATIONS**

Max. operating pressure:	<b>350 bar</b>
Rated flow:	<b>60 l/min</b>
Manifold:	<b>Steel</b>
Weight:	<b>2,61 kg</b>

**SEALING CAP**

Ordering code:  
**AT000020**



**NOTES**

Setting: at least 1.3 times the load induced pressure

**ORDERING CODES**

Quick code	Description	Pilot ratio	Main ports size	Standard setting (bar, Q=5 l/min)	Adjust. range (bar)	Pressure increase (bar/turn)
MB000929	MBDN-060-ATNR-04-N06-N350	4,2:1	A,B,P,T: CETOP 3	350	100-350	138
MB000774	MBDN-060-ATNR-04-N06-N200	4,2:1	A,B,P,T: CETOP 3	200	50-210	62