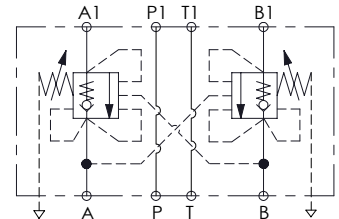
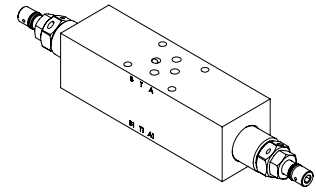
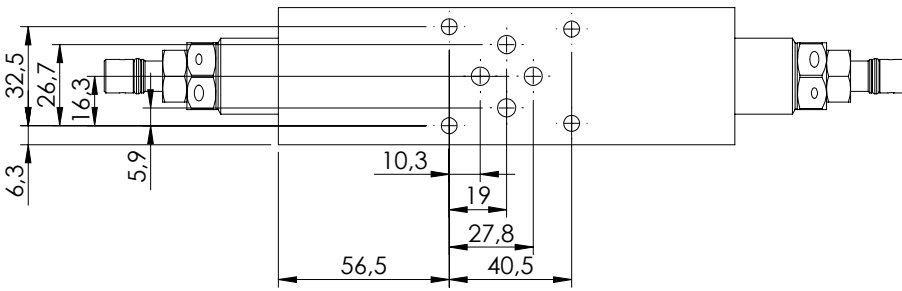
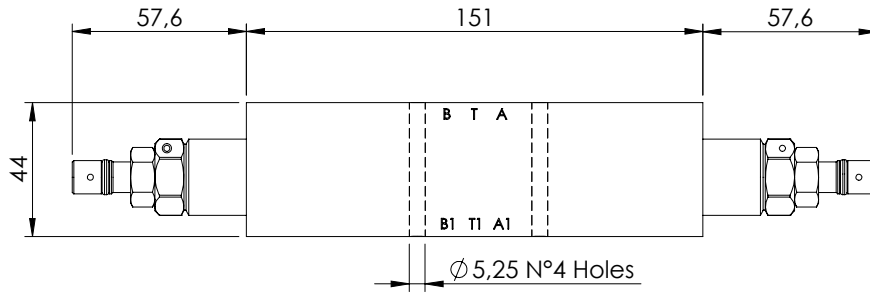
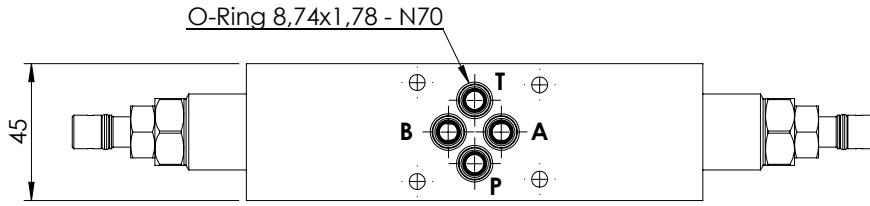


OVERCENTRE VALVE

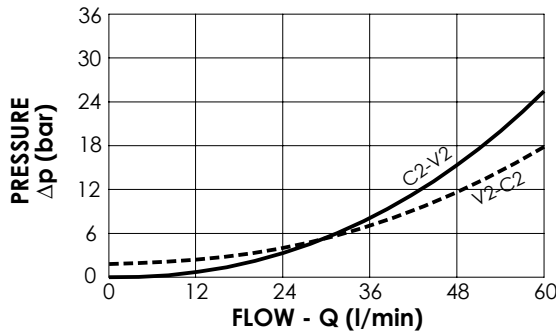
MBDP-060-ZTNR

DOUBLE ACTING
CETOP 3



SPECIFICATIONS

Max. operating pressure:	350 bar
Rated flow:	60 l/min
Manifold:	Aluminium
Weight:	1,09 kg



NOTES

Setting: at least 1.3 times the load induced pressure

ORDERING CODES

Quick code	Description	Pilot ratio	Main ports size	Standard setting (bar, Q=5 l/min)	Adjust. range (bar)	Pressure increase (bar/turn)
MB000454	MBDP-060-ZTNR-04-N06-N350	4,2:1	A,B,P,T: CETOP 3	350	100-350	166