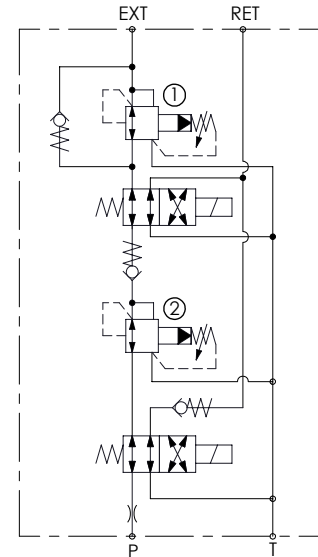
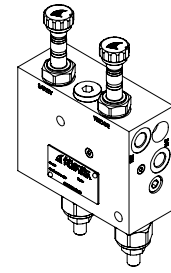
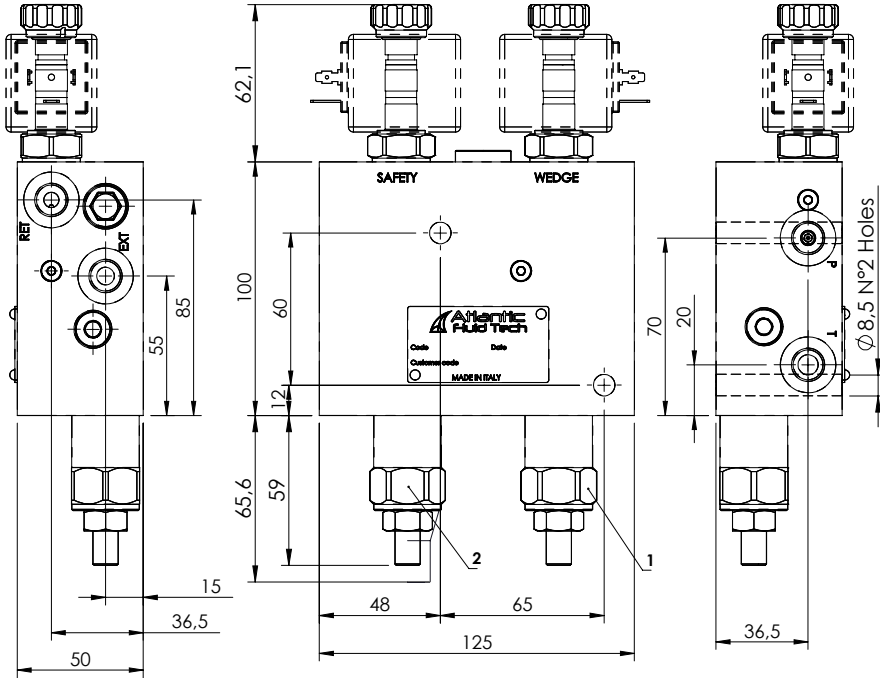


EXCAVATORS VALVE

BNND-010-AERV

AUXILIARY
QUICK HITCH



SPECIFICATIONS

Max. operating pressure: 350 bar

Rated flow: 10 l/min

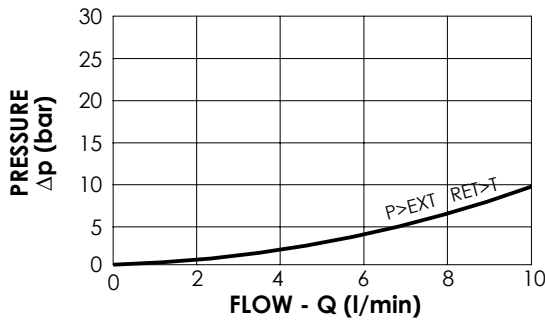
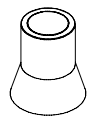
Manifold: Steel

Weight: 4,9 kg

Coil Type: M7

SEALING CAP

Ordering code:
AT00021



ORDERING CODES

Quick code	Description	Main ports size	Standard setting (bar, Q=5 l/min)	Adjustm. range (bar)	Pressure increase (bar/turn)
BD000207	BNND-010-AERV-NP-G14-N350	P,T,A,B M: G 1/4"	① :120 ② :240	70 - 350	114