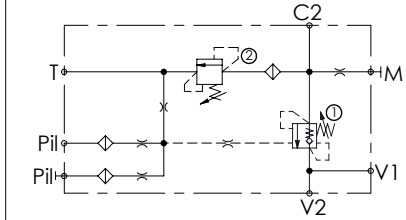
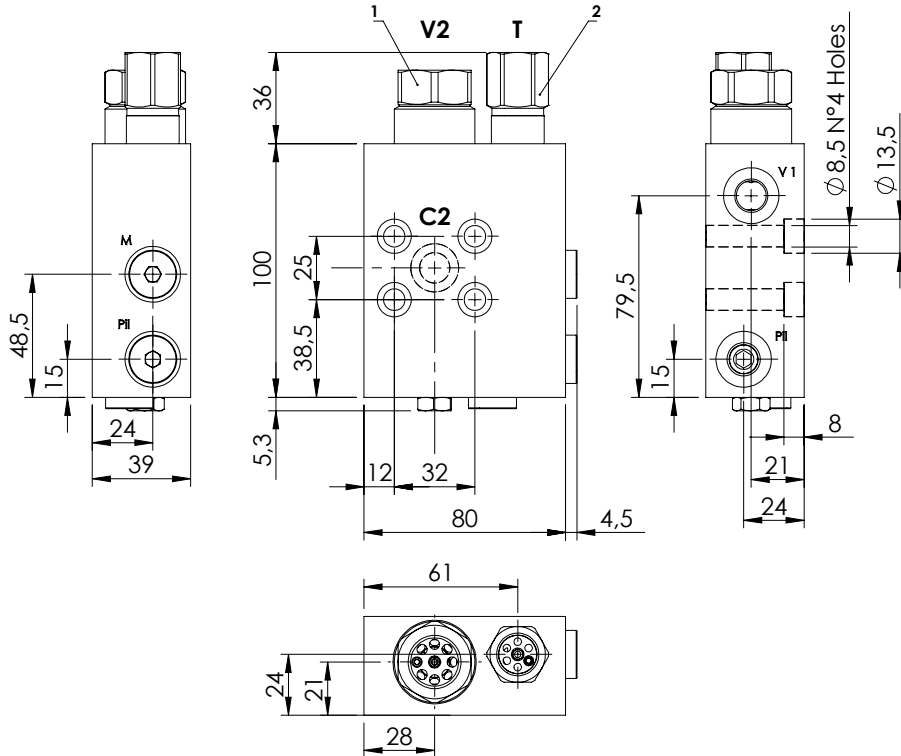
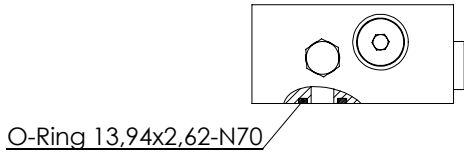
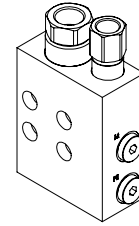


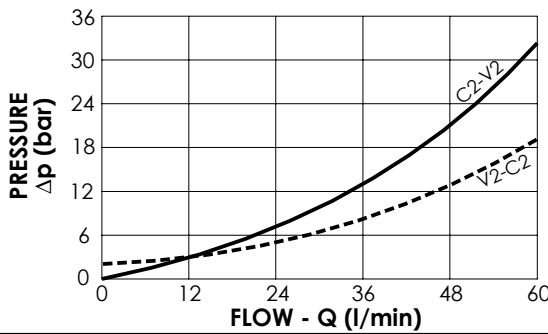
CONCRETE PUMP CRANES

MBSN-060-AASA



SPECIFICATIONS

Max. operating pressure:	500 bar
Rated flow:	60 l/min
Manifold:	Steel
Weight:	2,38 kg



NOTES

Setting: at least 1.3 times the load induced pressure

Pilot ratio: 7:1
Operated pilot ratio: 2,5:1

ORDERING CODES

Quick code	Description	Main ports size	Standard setting (bar, Q=5 l/min)	Adjust. range (bar)	Pressure increase (bar/turn)
MB000088	MBSN-060-AASA-07-G12-N500	V2: G1/2" T: G 3/8" M: G1/8" V1, Pil: G1/4" C2: Ø9	① :420 ② :280	① :200-450 ② :100-350	① :366 ② :102